



Real Places. Real Stories...

# Martin Grade Scenic Highway

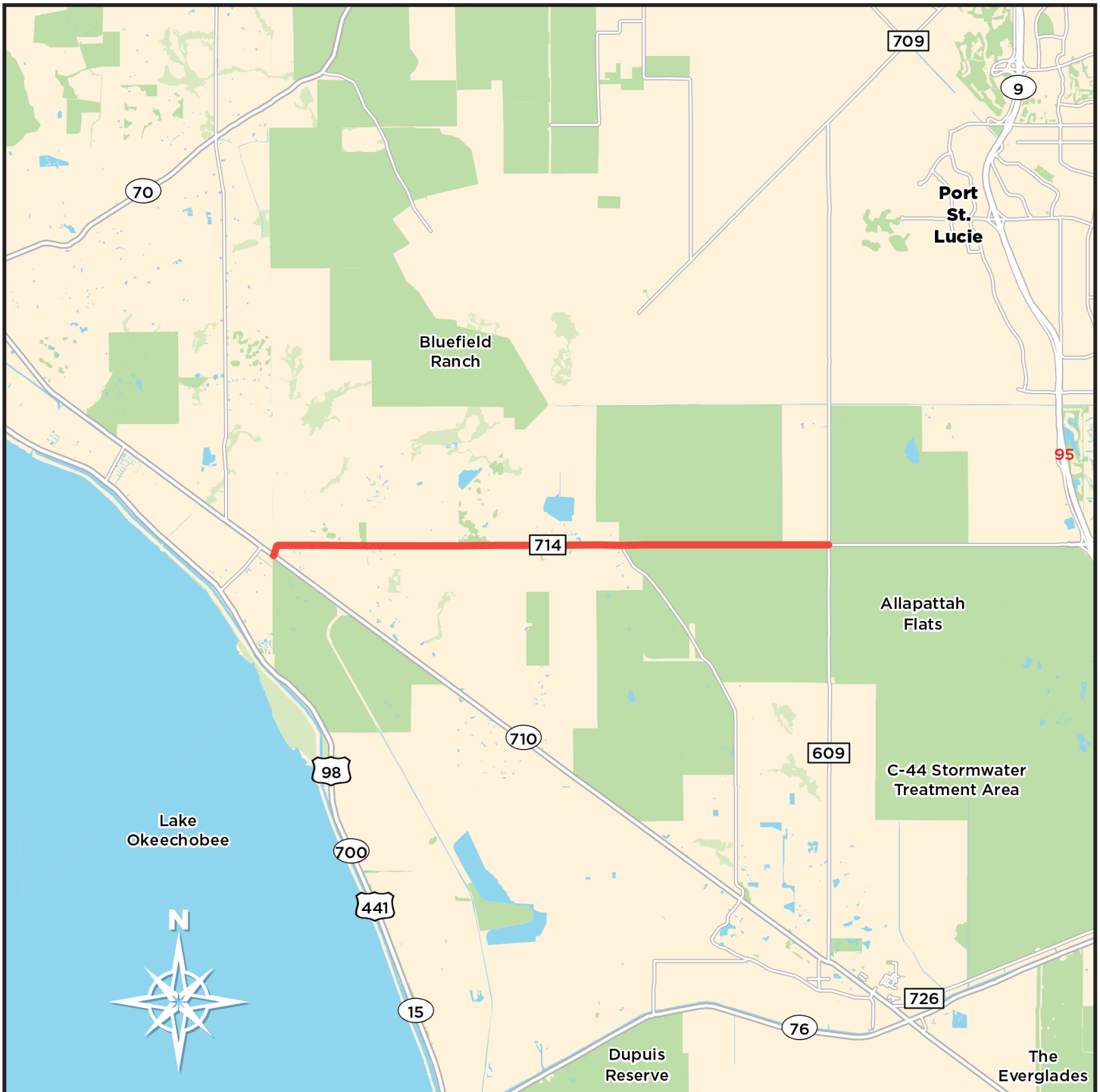
**Length of the Byway:** 12 Miles

**Designation Date:** Jan. 28, 2015

**FDOT District:** 4

**Website:** [martingrade.org](http://martingrade.org)

Just east of Lake Okeechobee, this roadway is a drive through a land that time seems to have forgotten. Locals call the road “The Grade.” It’s a historic, 12-mile road shaded by a canopy of hundred-year-old oaks and surrounded by pastures, groves, swamps, and woods just as it was when it was carved out of the wilderness by the region’s earliest settlers.



For more about our byway collection, visit [floridascenichighways.com](http://floridascenichighways.com)

Florida Scenic Highways is a program of the Florida Department of Transportation