


Lunch on the Byway  
Webinar

## FSHP Statewide CME Assessment

October 12, 2010



---

---

---

---

---


---

---

---

### What have we learned?

- There are five areas critical to CME sustainability
- Successful byway organizations commit time, energy and resources to building the capacity of the organization
- There is a process to guide byway organizations as they evolve



---

---

---

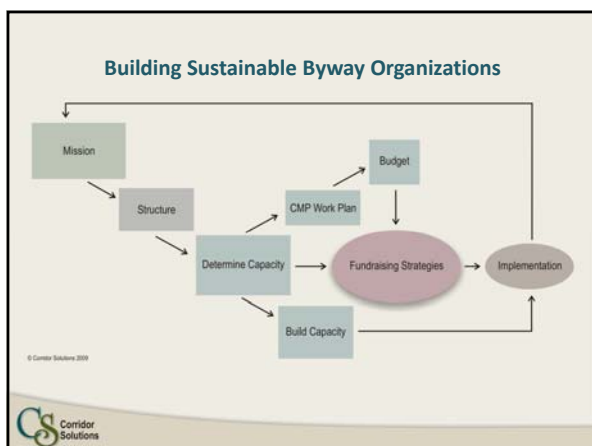
---

---

---

---

---



---

---

---

---

---

---

---

---

**Five Areas Critical to Sustainability**

1. Leadership
2. Finance
3. Community Involvement
4. Effectiveness
5. Administrative Capacity



---

---

---

---

---

---

---

---

**Five Areas Critical to Sustainability**

**Leadership**

- Chair and voting members (or board of directors)



---

---

---

---

---

---

---

---

**Five Areas Critical to Sustainability**

**Finance**

- Sources of funding
- Policies and procedures



---

---

---

---

---

---

---

---

**Five Areas Critical to Sustainability**

**Community Involvement**

- Visibility, recognition
- Level of outreach, stakeholder updates



---

---

---

---

---

---


---

---

**Five Areas Critical to Sustainability**

**Effectiveness**

- An organization's ability to get things done
  - Are programs being implemented?
  - Is the mission clearly articulated?
  - Is progress clearly visible to members and the community?



---

---

---

---

---

---


---

---

**Five Areas Critical to Sustainability**

**Administrative Capacity**

- The degree to which the organization has the administrative skills and resources to accomplish its mission and goals



---

---

---

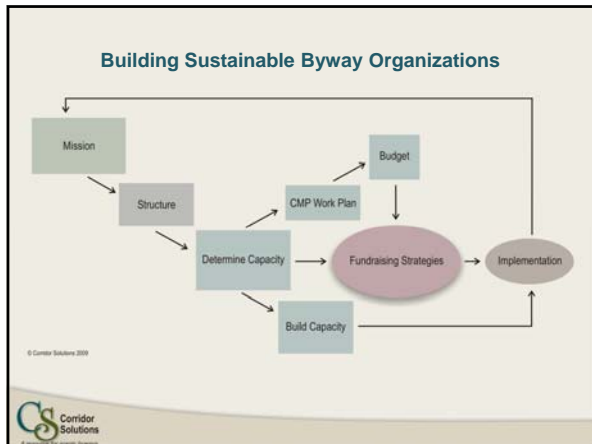
---

---

---

---

---




---

---

---

---

---

---

---

---

### Project Schedule

Primary Project Components:	Timeframe
1. Survey forms emailed to CME Leaders and Members	Sept 7, 2010
2. Phone interviews by consultant of: • District Coordinators • CME Leaders • CME Members (a sample, not all)	September – October 2010
3. Evaluation, Rating, and Report Development	November 2010 – January 2011
4. Final Report with sustainability ratings for each CME and statewide recommendations for training and support	February 2011

---

---

---

---

---

---

---

---

**Wanda Maloney**  
336.659.2457  
wmaloney@corridorsolutions.net

*A resource for scenic byways*

---

---

---

---

---

---

---

---