

# Volusia County Trails

OCTOBER 14, 2019

# Florida by Trail

The Coast to Coast Trail, together with the St. Johns River-to-Sea Loop and Heart of Florida Loop, provide visitors with over 600 miles of paved trails.



# How to pay for your trail construction

- Sun Trail – FDOT - \$25 million per year on average – new vehicle registration fees
  - Office of Greenways and Trails
    - 1/3 to fund the development of the Coast to Coast Trail
    - 1/3 to fund the development of the St. Johns River-to-Sea Loop
    - 1/3 to fund other trails on the Office of Greenways and Trails priority trail network
- Sun Trail can fund design, acquisition of right-of-way, and construction. No matching funds and no sunset!
- Sun Trail can also fund re-surfacing of a trail
- Sun Trail will not fund trail amenities to include restrooms, parking, wayfinding signage, maps, water fountains, etc.
- Eminent domain
  - Currently, Sun Trail will not include in 5 year work plan
- Maintenance contract



# Trail maintenance costs

- Establish level of service
  - Mowing – 20 times per year rural and 32 times per year urban – 61 inch cut
  - Blowing off trail- 1 to 2 times per week
  - Trash collection – 1 to 2 times per week
  - All other services are on an as needed basis (tree trimming, pavement repairs, vandalism repairs, etc.)
- \$3,900 per year per mile on average
  - Mowing - \$74.76 per cut per mile on average
  - Blowing off a trail - \$10.75 per mile on average
  - Trash collection - \$6.30 per can on average
- Lower your maintenance costs in the design/construction phase
  - Proper root raking- trees that die after construction will impact your operating costs
  - Minimum of 1 ¼ asphalt thickness with a 6 inch limestone base
  - Clear a 32 feet wide path for a 12 foot wide trail - this will prevent tree growth from damaging the trail down the road
  - Contractor should remove all dead or dying trees before project acceptance

# How to pay for trail maintenance

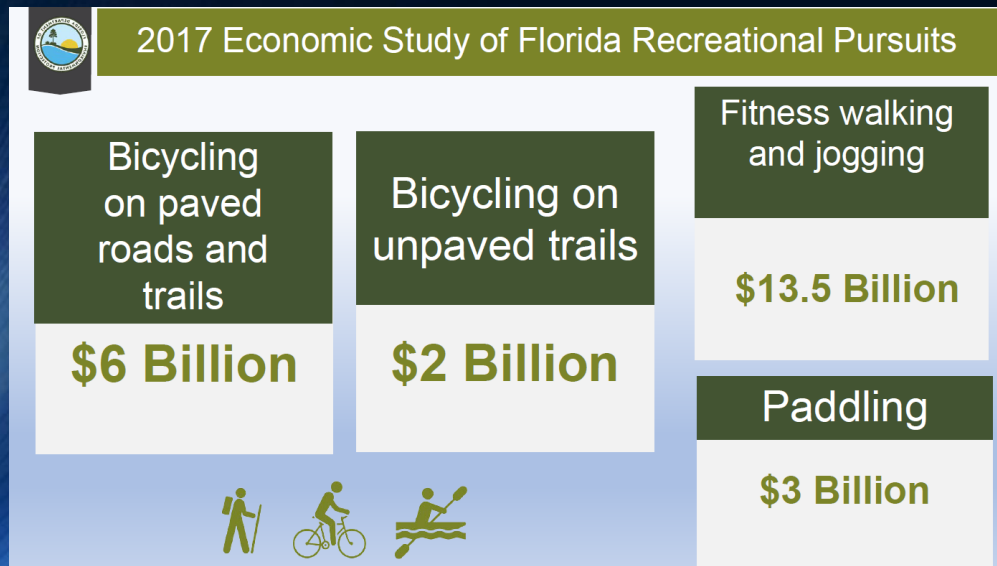
- “Trails are the most desired community amenity that homeowners seek when building a home” - National Association of Home Builders 2008.
- Various studies indicate property values increase 3% to 5% when near a trail which in turn boosts the amount of property taxes collected.
- Lets look at the numbers...

# Property values - by the numbers

- Taxable value of residential property within 1,000 feet of Volusia County's existing paved trail system
- Increase in residential property value attributable to proximity to trail system (4%)
- General fund millage rate is \$5.5900 per thousand dollars of taxable value
- Total incremental tax benefit to Volusia County
- Total incremental economic value to residential property owner

# Economic impact

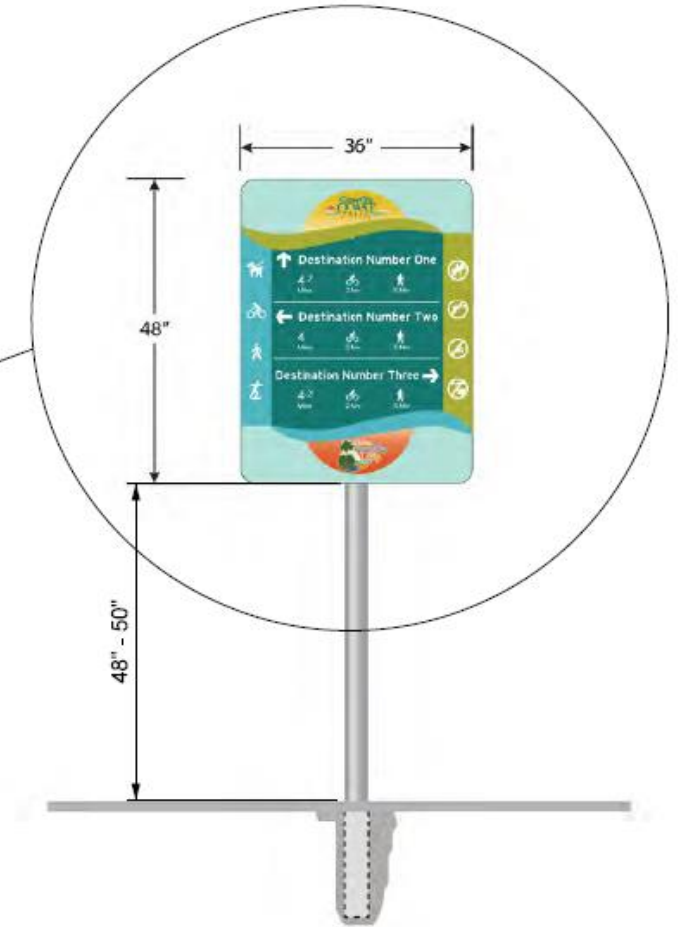
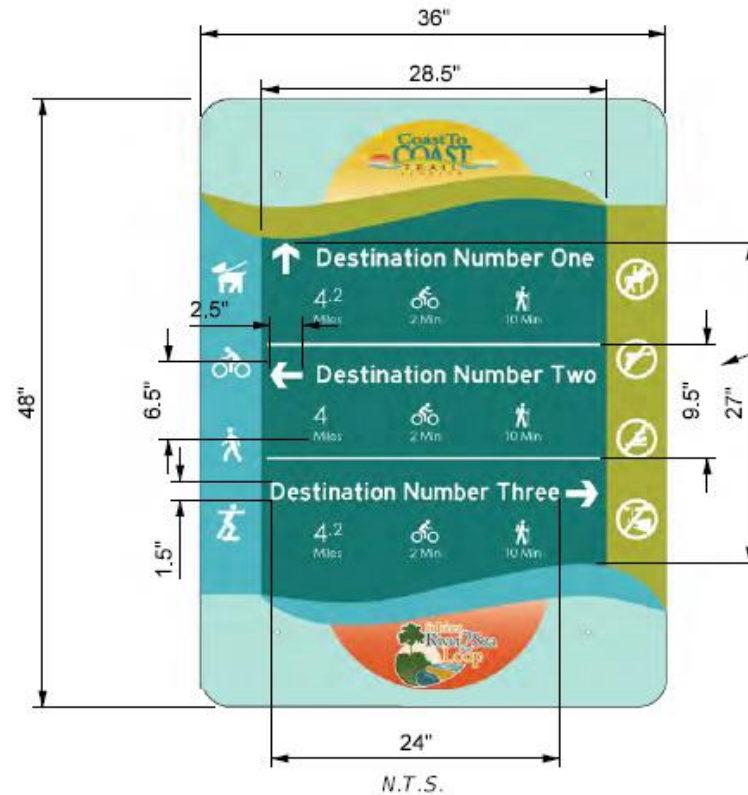
- Trail users spend approximately \$20 per visit
  - Evaluate by looking at incremental growth in visitors to your community because of your trails
  - Evaluate visitors already coming to your community but extend their stay
  - Evaluate local residents buying goods or services to use the trail



# Trail Signage

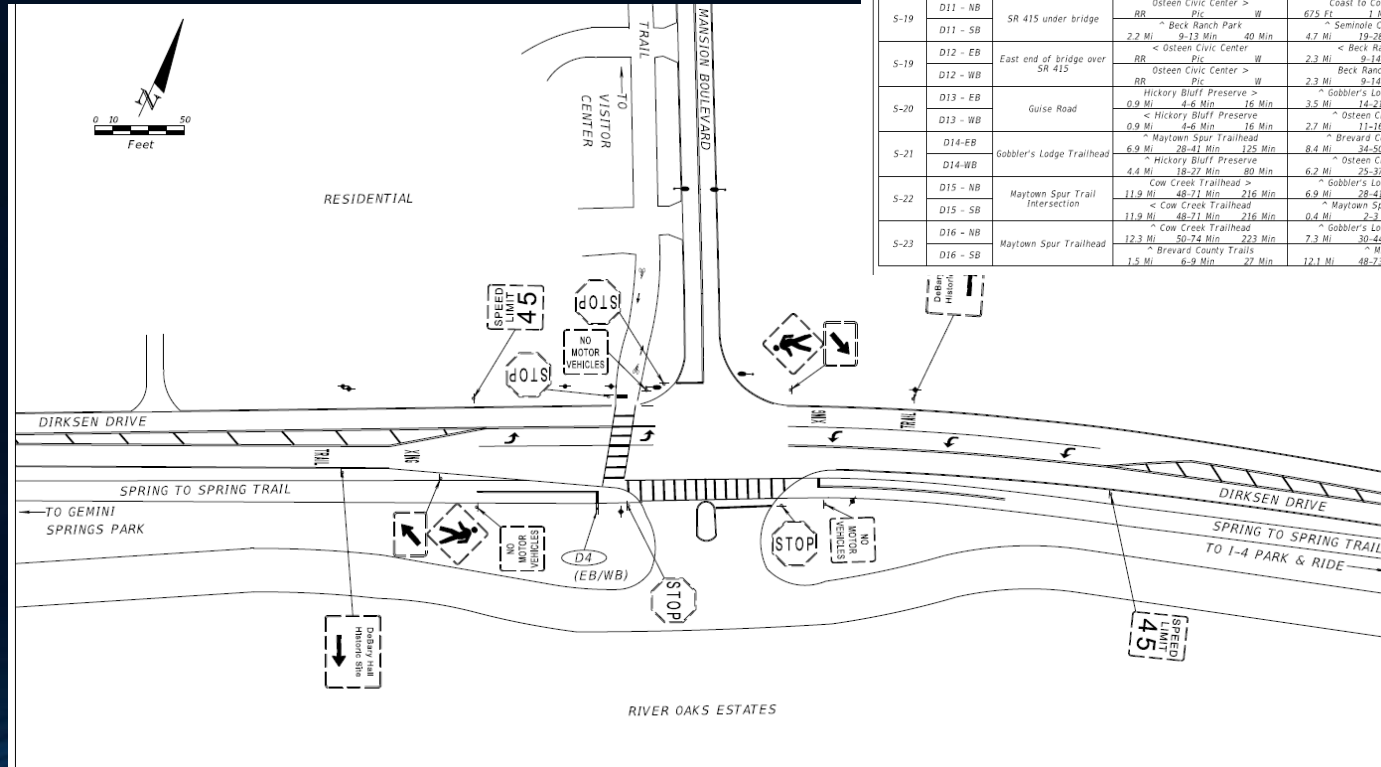
# Trail wayfinding

- Many details had to be coordinated with FDOT to comply with federal standards.
- Icons, duration of travel and mode of travel, art work, sign material, height, post material, powder coating, color palette, sign thickness, fasteners, etc.



# Sign locations and content

- Sign content and sign location at each installation point is depicted on the tables and maps.
- Most wayfinding signs are double sided to inform users traveling in opposite directions.



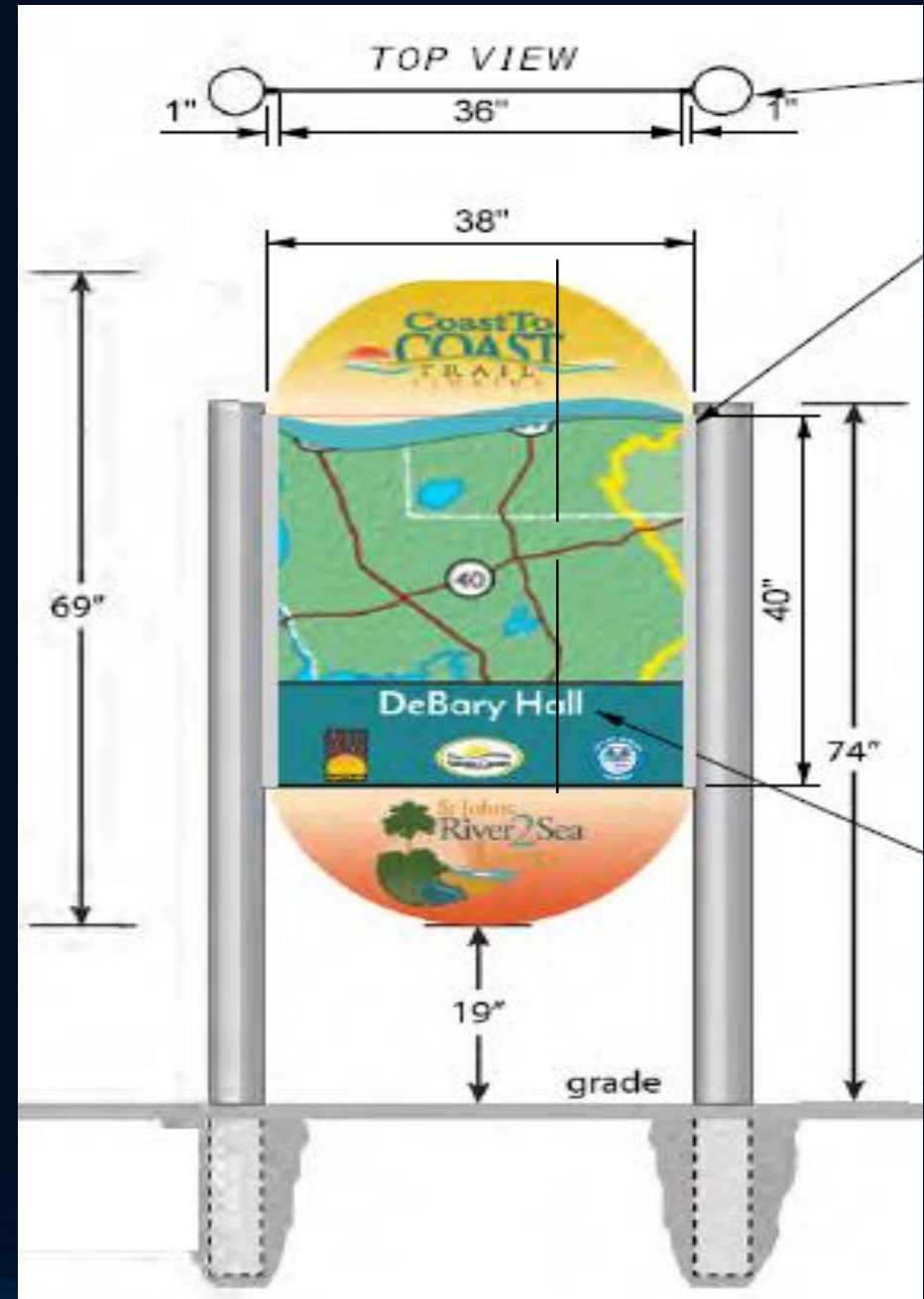
Coast to Coast Trail Destination Signs									
Sheet	Sign ID	Location	Destination 1		Destination 2		Destination 3		
S-8	D1 - NB	Lake Monroe Park	< Lake Monroe Park	PG	> Seminole County Trails	11 Min	> Sanford	18-27 Min	82 Min
	D1 - SB		Lake Monroe Park	PG	< Seminole County Trails	11 Min	< Sanford	18-27 Min	82 Min
S-9	D2 - NB	Intersection with SunRail Path	< SunRail DeBary Station	8 Min	> Gemini Springs Park	16 Min	> Trail Welcome Center	17-25 Min	76 Min
	D2 - SB		SunRail DeBary Station	8 Min	< Gemini Springs Park	16 Min	< Trail Welcome Center	17-25 Min	76 Min
S-10	D3 - NB	Gemini Trailhead	< Lake Monroe Park	44 Min	> Lake Monroe Park	22 Min	> Blue Spring Park	30-45 Min	137 Min
	D3 - SB		Lake Monroe Park	44 Min	< Lake Monroe Park	22 Min	< Blue Spring Park	30-45 Min	137 Min
S-11	D4 - EB	Dirksen Road at Mansion Blvd	< DeBary Hall	9 Min	> Trail Welcome Center	9 Min	> Green Springs Park	12-18 Min	56 Min
	D4 - WB		DeBary Hall	9 Min	< Trail Welcome Center	9 Min	< Green Springs Park	12-18 Min	56 Min
S-12	D5 - NB	Trail Welcome Center & DeBary Hall	< Trail Welcome Center	400 Ft	> DeBary Hall	2 Min	> Green Springs Park	14-21 Min	65 Min
	D5 - SB		Trail Welcome Center	400 Ft	< DeBary Hall	2 Min	< Green Springs Park	14-21 Min	65 Min
S-13	D6 - NB	I-4 Park & Ride	< Trail Welcome Center	20 Min	> Green Springs Park	33 Min	> Green Springs Park	9-15 Min	44 Min
	D6 - SB		Trail Welcome Center	20 Min	< Green Springs Park	33 Min	< Green Springs Park	9-15 Min	44 Min
S-14	D7 - NB	Providence Blvd	< Thornby Park	7 Min	> Trail Welcome Center	7 Min	> Gemini Springs Park	24-36 Min	109 Min
	D7 - WB		Thornby Park	7 Min	< Trail Welcome Center	7 Min	< Gemini Springs Park	24-36 Min	109 Min
S-16	D8 - EB	Trail Entrance to Green Springs Park	< Green Springs Park	49 Min	> Trail Welcome Center	49 Min	> Gemini Springs Park	22-34 Min	102 Min
	D8 - WB		Green Springs Park	49 Min	< Trail Welcome Center	49 Min	< Gemini Springs Park	22-34 Min	102 Min
S-17	D9 - NB	Audubon Park Gate	< Audubon Park	49 Min	> Green Springs Park	49 Min	> Trail Welcome Center	25-38 Min	115 Min
	D9 - WB		Audubon Park	49 Min	< Green Springs Park	49 Min	< Trail Welcome Center	25-38 Min	115 Min
S-18	D10 - NB	Beck Ranch Park	< Beck Ranch Park	42 Min	> Coast to Coast Trail	42 Min	> Osteen Civic Center	9-14 Min	42 Min
	D10 - SB		Beck Ranch Park	42 Min	< Coast to Coast Trail	42 Min	< Osteen Civic Center	9-14 Min	42 Min
S-19	D11 - NB	SR 415 under bridge	< Beck Ranch Park	40 Min	> Seminole County Trails	85 Min	> Sanford Marina	37-55 Min	167 Min
	D11 - SB		Beck Ranch Park	40 Min	< Seminole County Trails	85 Min	< Sanford Marina	37-55 Min	167 Min
S-19	D12 - EB	East end of bridge over SR 415	< Osteen Civic Center	42 Min	> Beck Ranch Park	42 Min	> Green Springs Park	25-37 Min	113 Min
	D12 - WB		Osteen Civic Center	42 Min	< Beck Ranch Park	42 Min	< Green Springs Park	25-37 Min	113 Min
S-20	D13 - EB	Guise Road	< Hickory Bluff Preserve	16 Min	> Gobblers Lodge Trailhead	64 Min	> Maytown Spur Trailhead	42-62 Min	189 Min
	D13 - WB		Hickory Bluff Preserve	16 Min	< Gobblers Lodge Trailhead	64 Min	< Maytown Spur Trailhead	42-62 Min	189 Min
S-21	D14 - EB	Gobblers Lodge Trailhead	< Maytown Spur Trailhead	125 Min	> Brevard County Trails	153 Min	> Cow Creek Trailhead	73-110 Min	333 Min
	D14 - WB		Maytown Spur Trailhead	125 Min	< Brevard County Trails	153 Min	< Cow Creek Trailhead	73-110 Min	333 Min
S-22	D15 - NB	Maytown Spur Trail Intersection	< Cow Creek Trailhead	216 Min	> Gobblers Lodge Trailhead	175 Min	> Hickory Bluff Preserve	44-65 Min	198 Min
	D15 - SB		Cow Creek Trailhead	216 Min	< Gobblers Lodge Trailhead	175 Min	< Hickory Bluff Preserve	44-65 Min	198 Min
S-23	D16 - NB	Maytown Spur Trailhead	< Cow Creek Trailhead	223 Min	> Gobblers Lodge Trailhead	132 Min	> Hickory Bluff Preserve	46-68 Min	205 Min
	D16 - SB		Cow Creek Trailhead	223 Min	< Gobblers Lodge Trailhead	132 Min	< Hickory Bluff Preserve	46-68 Min	205 Min

700-1-12 2 AS  
700-1-13 14 AS

- NOTES:
- LEGEND:
    - RR (RESTROOM) = Restrooms
    - PG (PLAYGROUND) = Playground
    - W (WATER) = Drinking water
    - BIN (BINOCULARS) = Binoculars
    - HIKE (HIKING) = Hiking
    - PIC (PICNIC AREA) = Picnic area
    - NB = NORTHBOUND
    - SB = SOUTHBOUND
    - ^ =
    - > =
    - < =
  - SIGN LOCATIONS ARE PROVIDED ON SHEETS S-8 TO S-23.
  - POSITION SIGNS SUCH THAT THE NORTHBOUND (NB) IS VISIBLE TO TRAIL USERS TRAVELLING NORTHBOUND. USE SAME SYSTEM FOR SOUTHBOUND, EASTBOUND AND WESTBOUND.
  - D3 AND D6 ARE SINGLE-SIDED. ALL OTHERS ARE BACK TO BACK.

# Trail head map

- Coast to Coast and the SJR2C Loop logos both represented.
- Local entity 's logo will be represented on the ribbon below the map. <sup>69"</sup>  
<sub>38"</sub> TOP VIEW
- Two posts with a track on either side of the map will allow maps to be updated and re-installed.
- Maps will also be two sided



# Local and regional maps



# Trail mile markers and emergency information

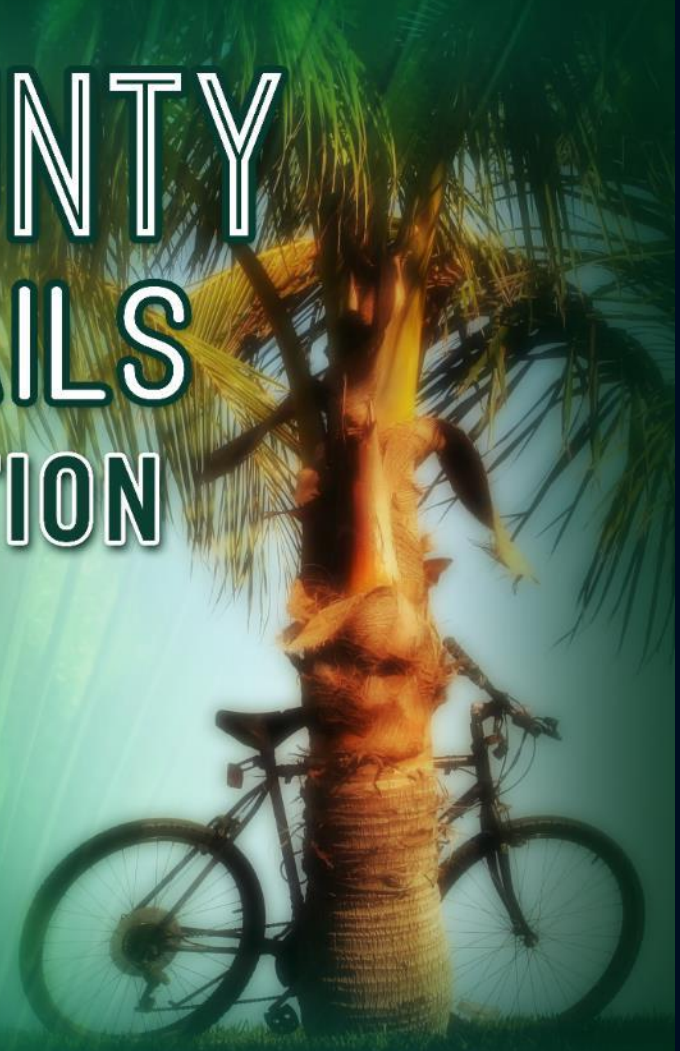


DUAL LOGO MILE MARKER SIGN DETAIL (FOR MILE MARKER SIGNS 2 TO 24.5)

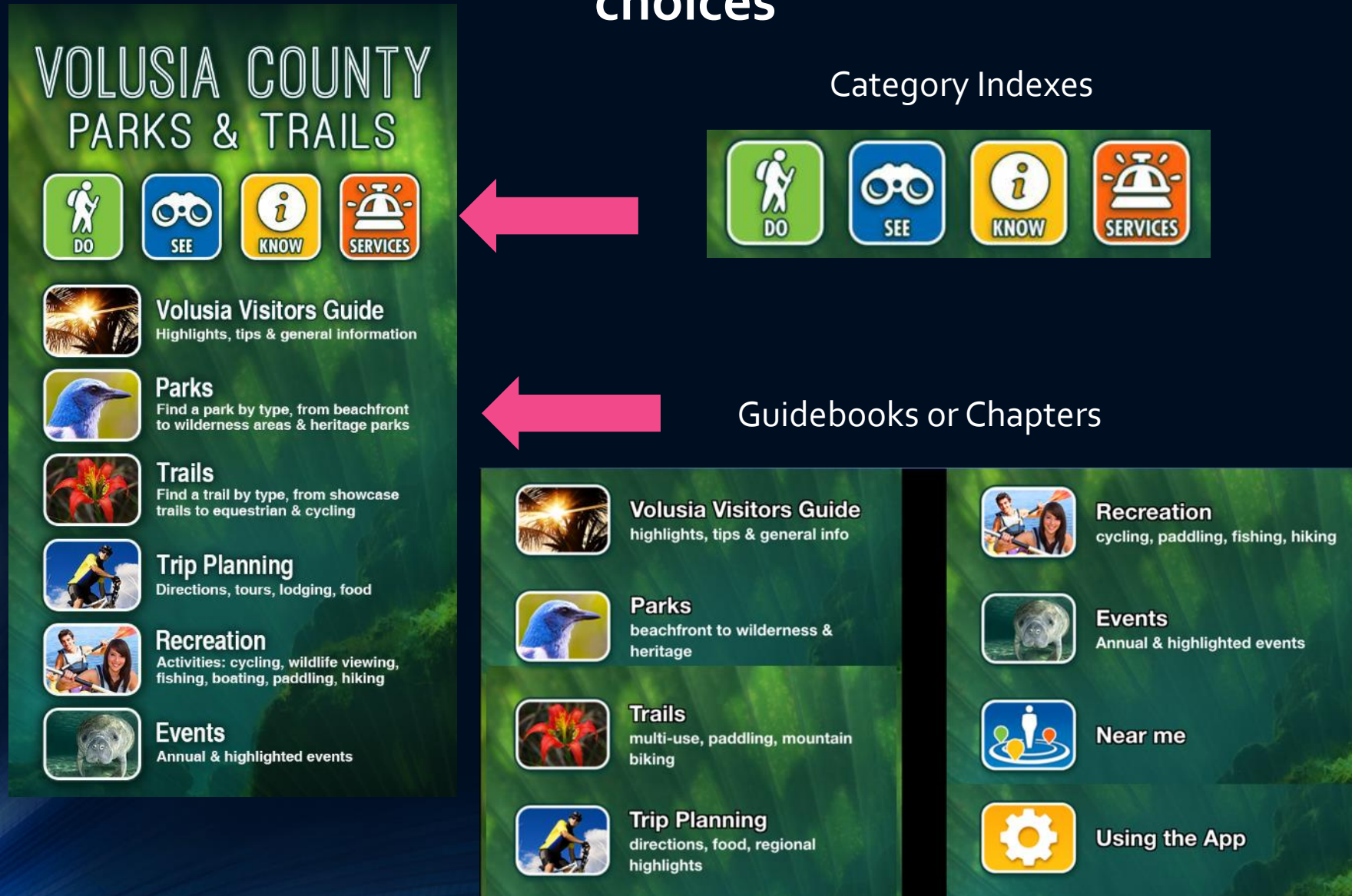
TRAIL SIDE OF POST      BACK SIDE OF POST

 <b>MILE</b> <b>26.5</b>  	 <b>Lat/Long:</b> N28.84353, W81.31877  <b>USNG:</b> 17RMM 68905 90692  <b>IN CASE OF EMERGENCY DIAL 9-1-1</b>  <b>Non-Emergency Call 386-943-8276</b>	 <b>MILE</b> <b>26.5</b>  	  Please Keep Our Trails Clean For Everyone    Download the app for Maps and Amenities   
--	--	--	---

# VOLUSIA COUNTY PARKS & TRAILS MOBILE APPLICATION



# The front page of the App consists of two navigation choices





**Near me**



**Volusia County  
Parks & Trails**

**Nearest 25 places**

**David E. Disney Tennis Center**

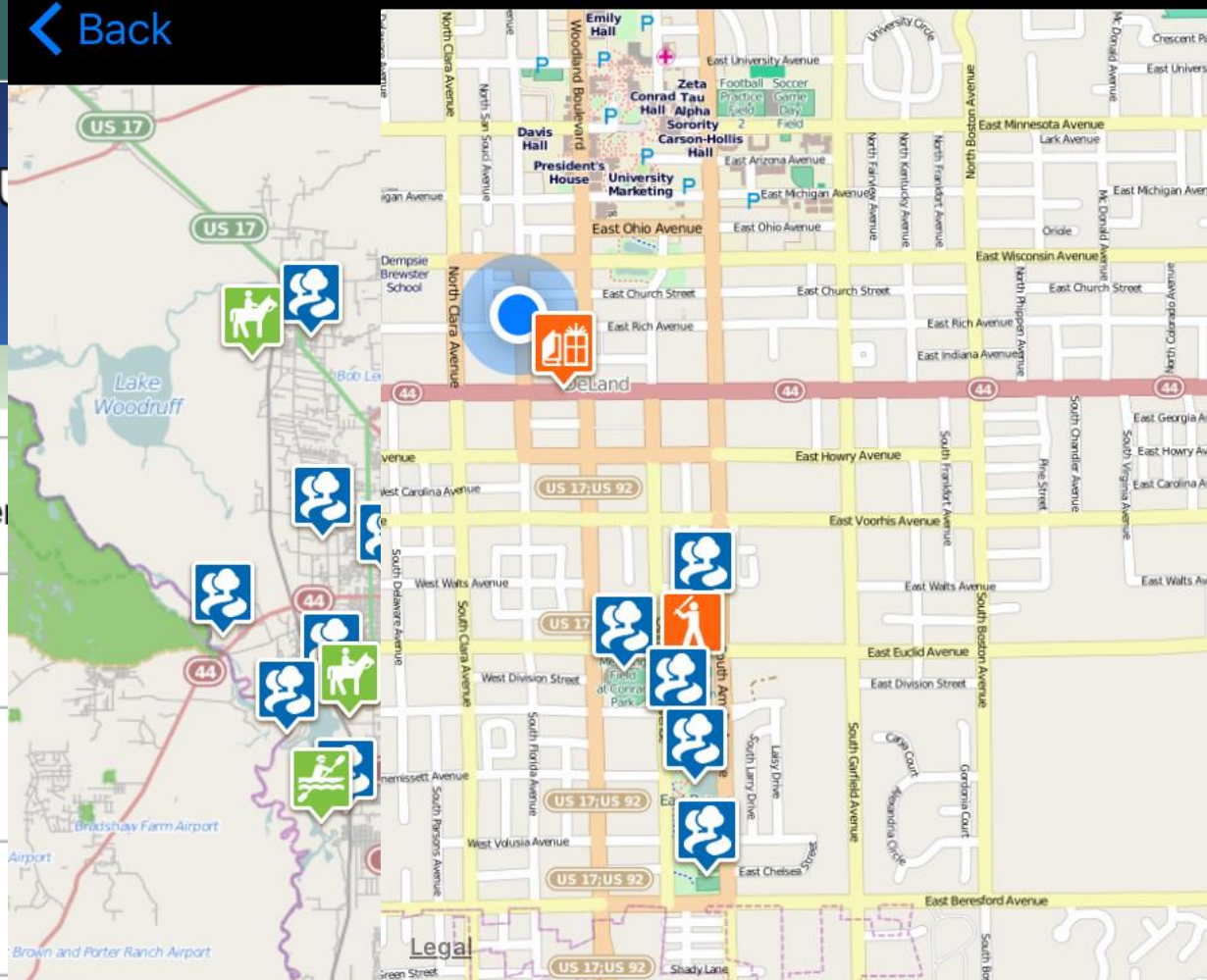
**Blue Lake Boat Ramp**

**Barkley Square Dog Park**

**Lake Beresford Park**

**Sperling Sports Complex**

**< Back**



**< Back**



0.0000

**Offline**



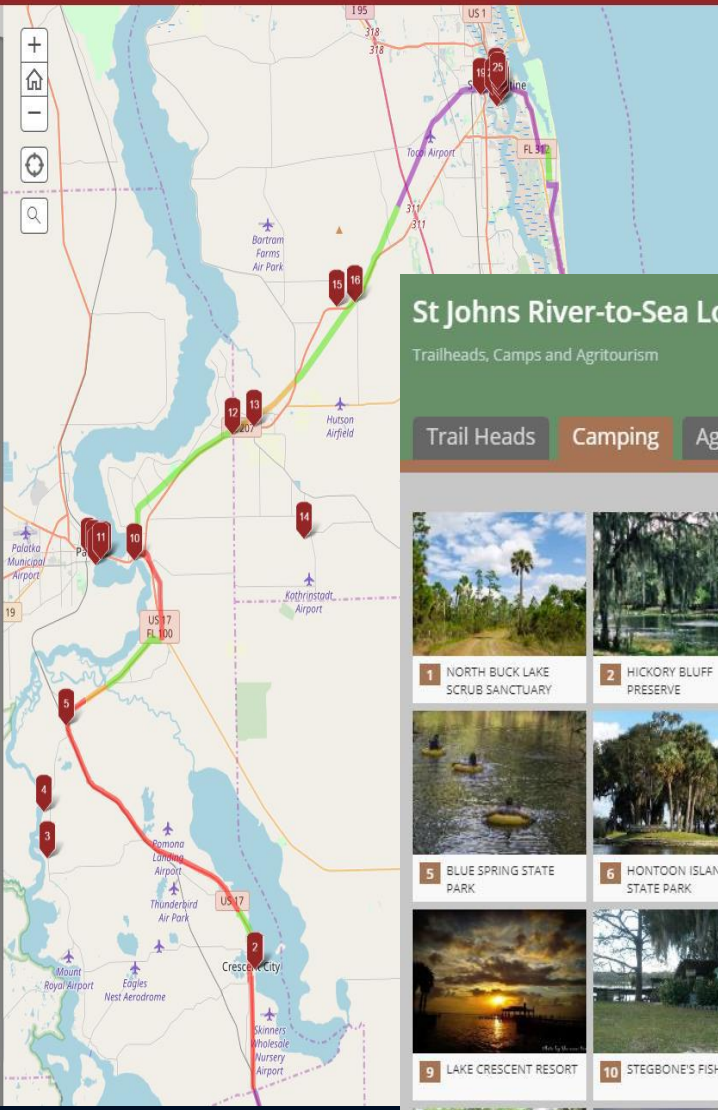
# DeBary Hall - Trail Welcome Center



St Johns River-to-Sea Loop

Trailheads, Camps and Agritourism

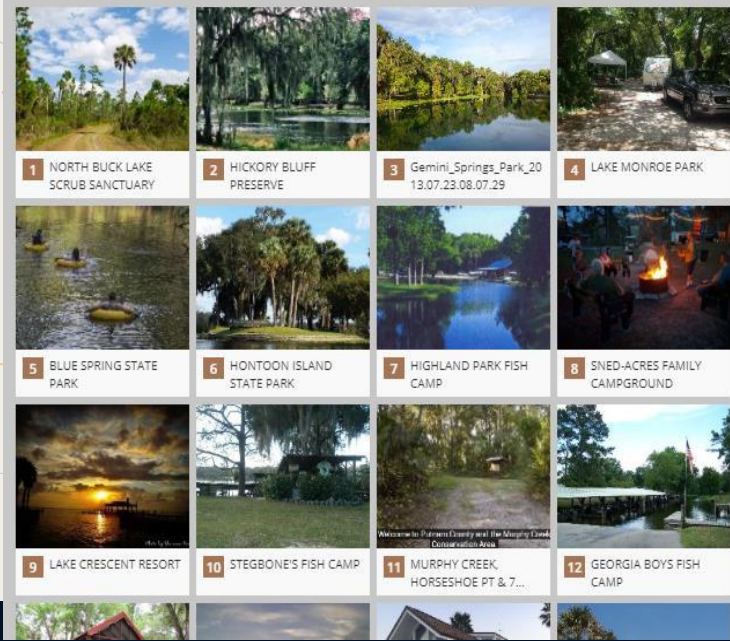
- Trail Heads
- Camping
- Agritourism Corridor



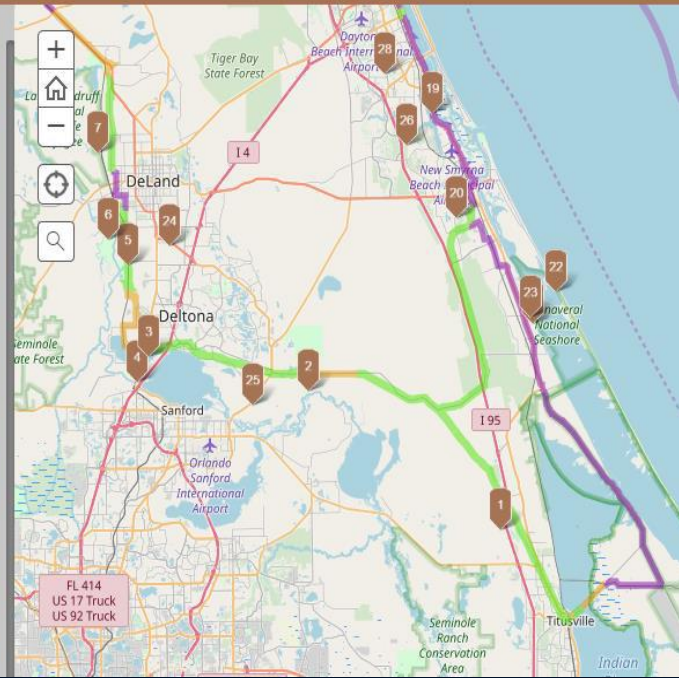
St Johns River-to-Sea Loop

Trailheads, Camps and Agritourism

- Trail Heads
- Camping
- Agritourism Corridor



Tools to help you navigate your trip



# Questions?

**Tim Baylie, Director  
Parks, Recreation, and Culture  
[tbaylie@volusia.org](mailto:tbaylie@volusia.org)**

