

2024 FSHP Annual Meeting

March 7, 2024

*Byway Success
through
Partnership*



Courtney Campbell Scenic Highway

Making the Connection

Partnership as a means for Promoting
Intrinsic Values

Dean Stoddart – FSHP State Coordinator



What is intrinsic?

The National Scenic Byways Program defines intrinsic quality as “features that are considered representative, unique, irreplaceable, or distinctly characteristic of an area.”

(FHWA Interim Policy, May 18, 1995)



What are the intrinsic values?

- Archaeological
- Cultural
- Historic
- Natural
- Recreational
- Scenic



Madira Bickel Mound State Archaeological Site in Terra Ceia (Archaeological).
Indigenous occupation reaches back 2,000 years

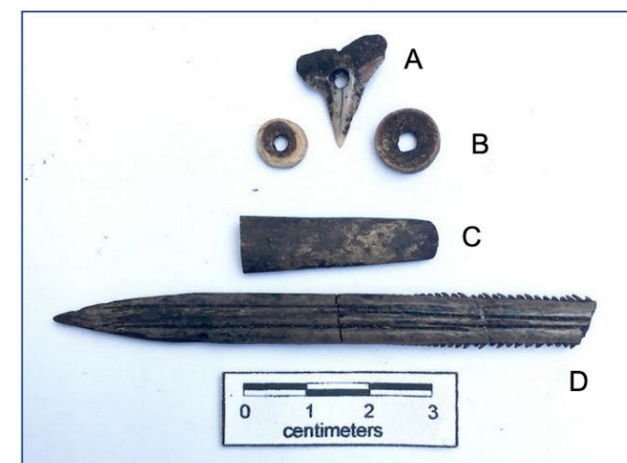
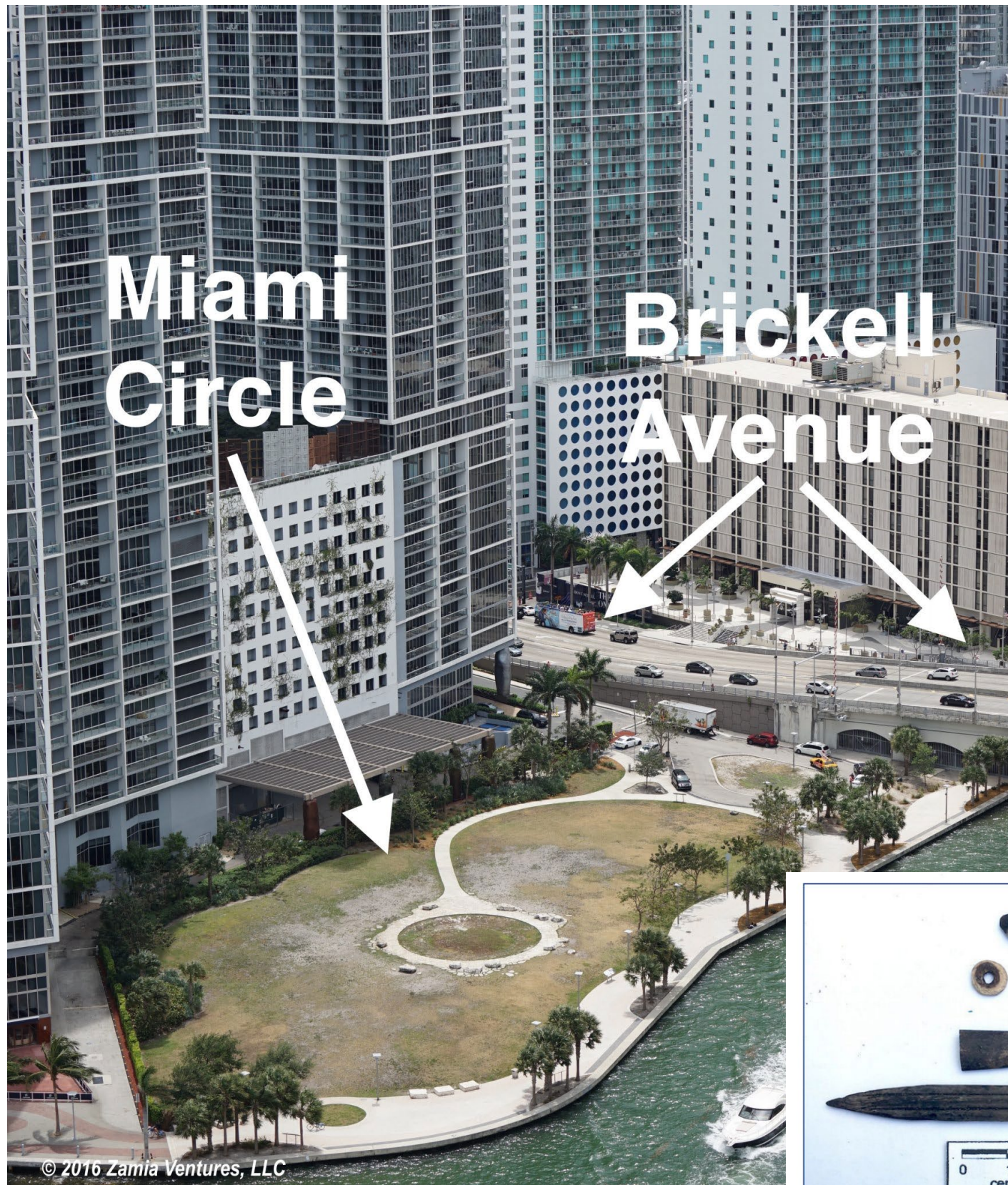
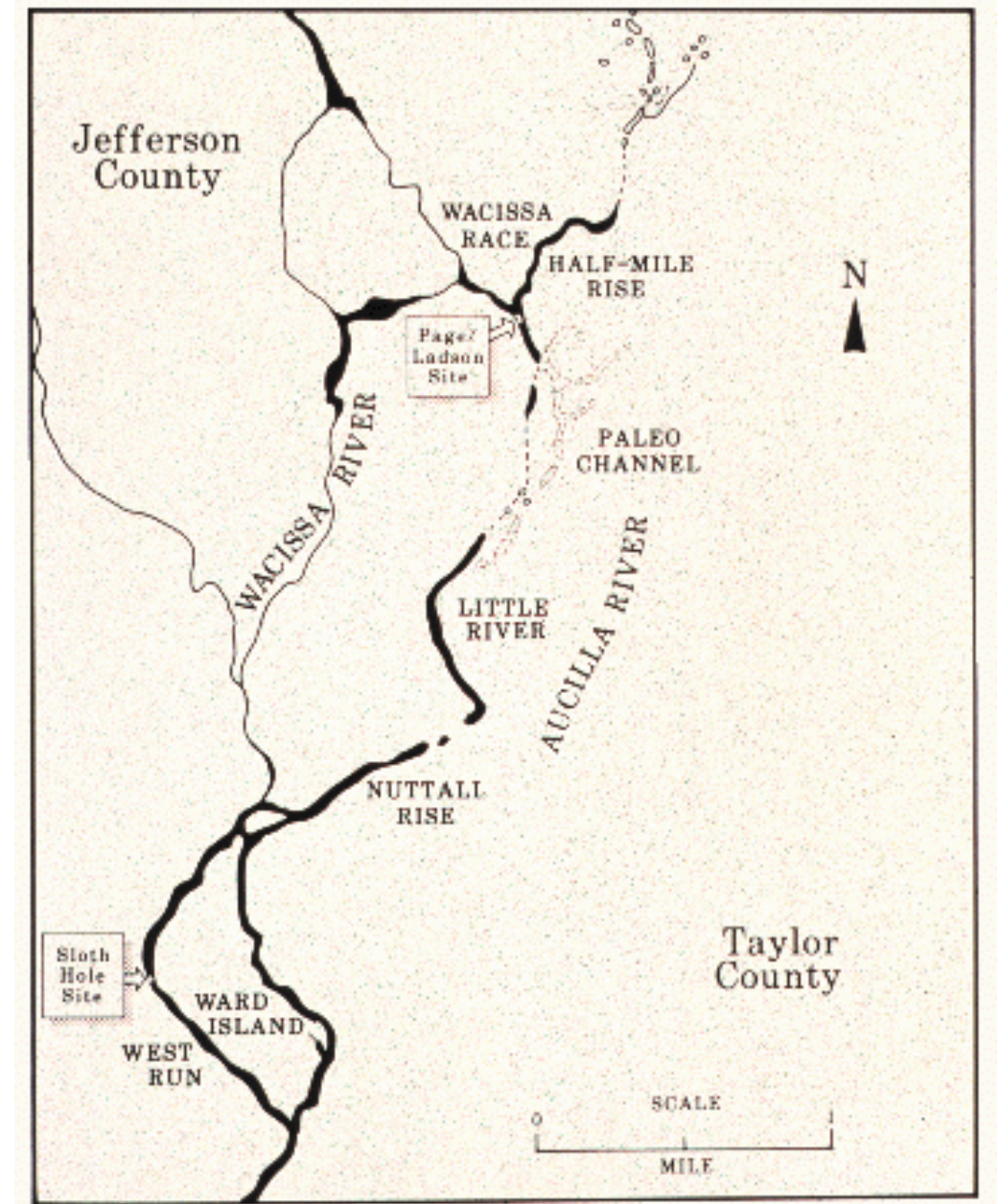
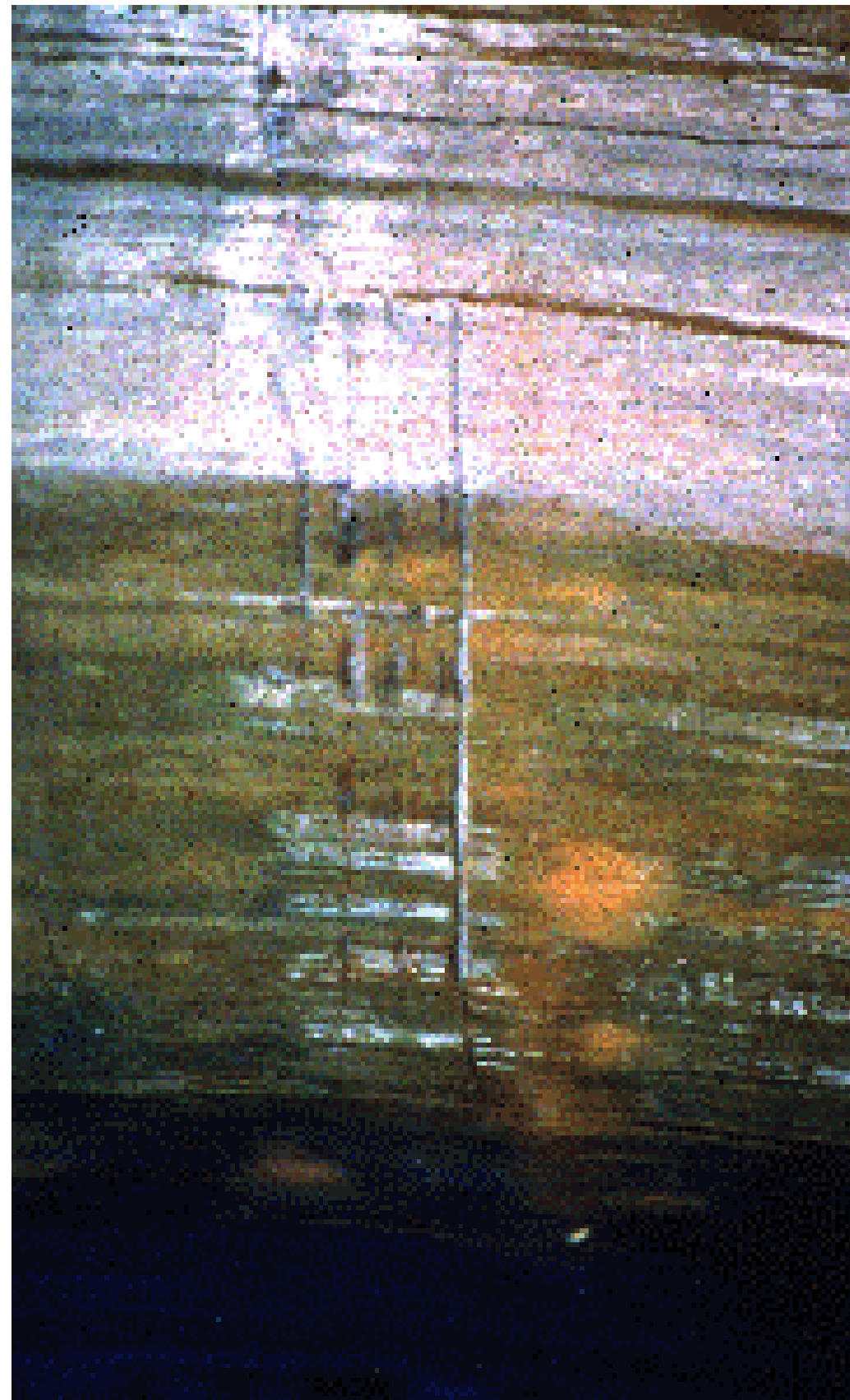


Figure 17. Bone artifacts. A: drilled shark tooth. B: possible bone beads from shark vertebrae. C: Bone pin fragment. D: sting ray point.

Miami Circle Park (Archaeological) Artifacts provide evidence of continuous habitation going back 7,000 years.



Page-Ladson Archaeological and Paleontological Site (Archaeological) Inhabited 14,550 years ago.



Devil's Millhopper in Gainesville (Natural)

CARNIVOROUS PLANTS OF APALACHICOLA NATIONAL FOREST



Apalachicola Biosphere Reserve – Unesco Biodome (Natural)



AH-TAH-THI-KI MUSEUM PRESENTS

AMERICAN INDIGENOUS ARTS CELEBRATION

November 3 & 4
Big Cypress Indian Reservation

Join us at the American Indigenous Arts Celebration and immerse yourself in the electrifying showcase of Indigenous Pride!

- Native Pride Dancers -
- HAKA Māori Cultural Experience -
- Seminole Fashion Show -
- Native Craft Vendors -
- Alligator Wrestling -
- Whakairo Wood Carving -
- Raranga Basket Weaving -
- Mau Rakau Weaponry -
- Cultural Displays -
- Taa Moko (Tattoo) Presentation -
- Seminole & Māori Live Art Expo -
- MMIP Tribute -
- Live Music & Native Food -

SEMINOLE TRIBE OF FLORIDA
AH-TAH-THI-KI
MUSEUM
A PLACE TO LEARN. A PLACE TO REMEMBER.

ahtathiki.com

Big Cypress Seminole Indian Reservation in the Everglades (Cultural)

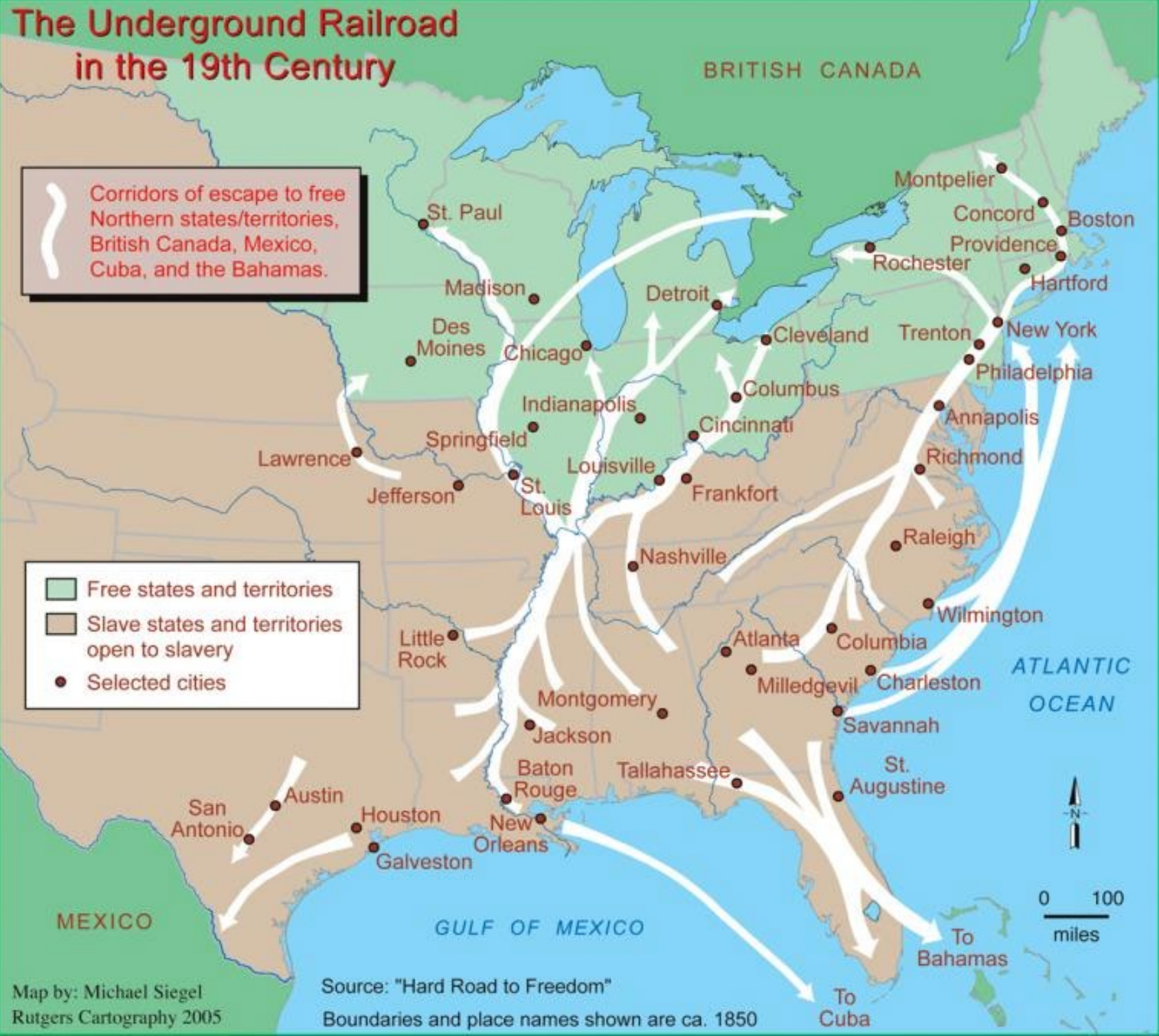


Mission San Luis in Tallahassee (Archeological and Cultural)

The Underground Railroad in the 19th Century

Corridors of escape to free Northern states/territories, British Canada, Mexico, Cuba, and the Bahamas.

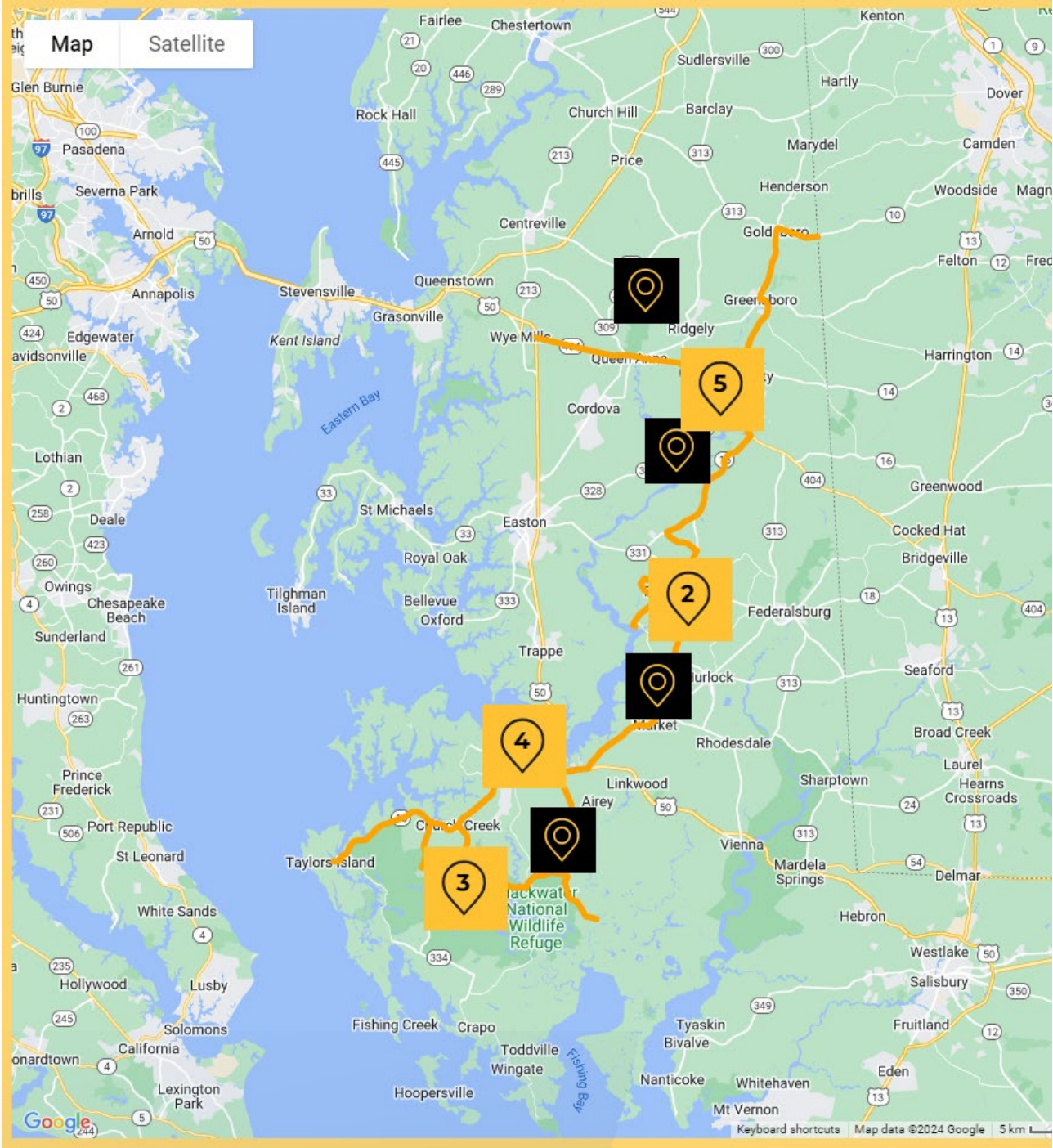
- Free states and territories
- Slave states and territories open to slavery
- Selected cities



Underground Railroad Statewide (Cultural)

Harriet Tubman Underground Railroad Scenic Byway

Explore the secret network of trails, waterways and safe houses used by enslaved people fleeing northward to escape slavery.

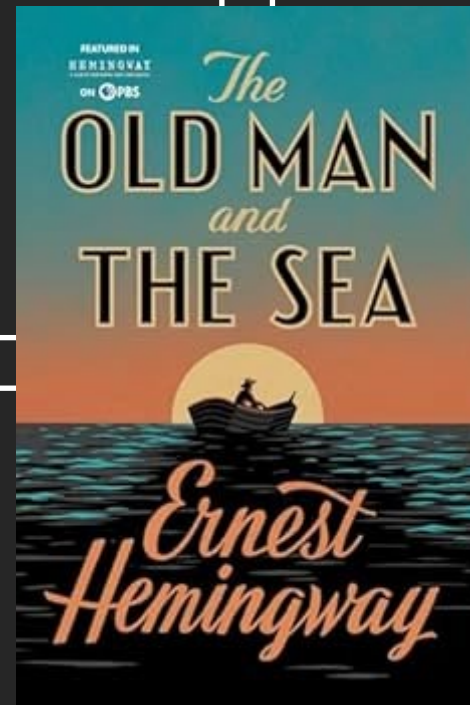


<https://www.visitmaryland.org/scenic-byways/harriet-tubman-underground-railroad>



Weeki Wachee State Park in Hernando County

(Archeological, Cultural, and Recreational)



Freshwater and Saltwater Fishing (Recreational)



Water Sports (Active Recreation)



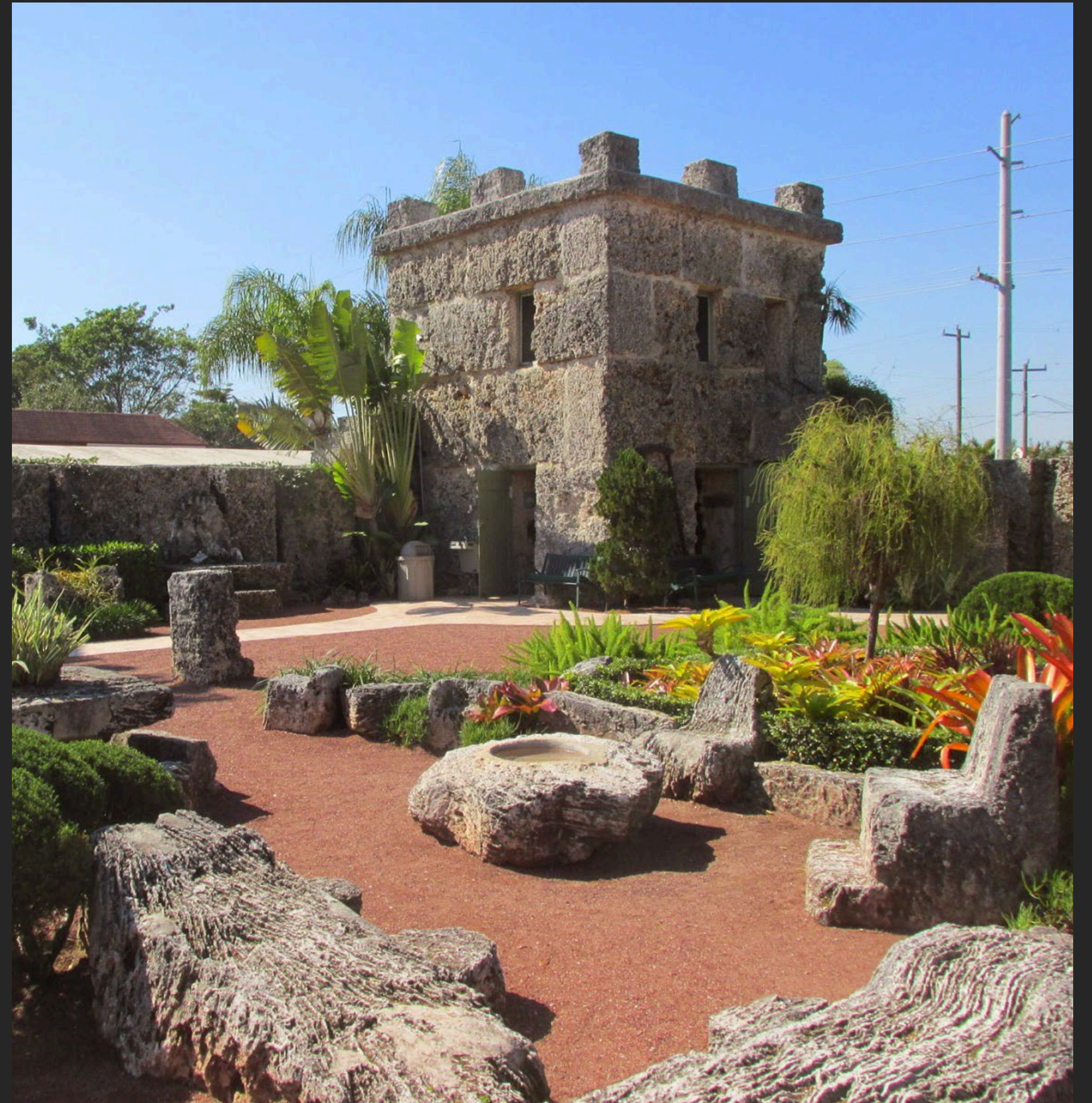
Bahia Honda Beach State Park



Clearwater Beach – Clearwater (Passive Recreation)



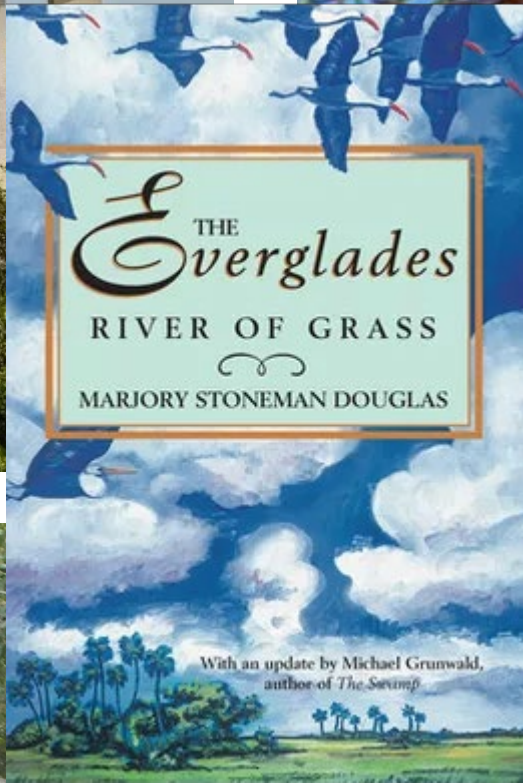
Koreshan State Park In Estero. (Historic)



Coral Castle in Homestead (Historic)



Scenic – Siesta Key Beach





Find your partners

- Look for local, statewide, and national partners
- Look for public and private partners
- Lean on your volunteers for support
- It's never too late to start networking!



Why partnerships?

Partnerships can ...

- Provide a new untapped source of volunteers
- Reinvigorate local interest in your Byway
- A source for new and innovative ideas
- Enhance the stability of your byway organization
- Create a theme by which your byway and partners can unite
- Create a larger draw for attracting tourists
- Create a larger group of invested leaders
- Provide a larger, more influential group to provide protections
- Co-branding of byways with partners

Archaeological

- Embodies the physical evidence or remains of known historic or prehistoric human life, activity, or culture
- Examples include:
 - Significant ruins
 - Artifacts
 - Inscriptions
 - Structural remains
 - Human remains



*Heritage Crossroads: Miles
History Scenic Highway*



Potential Partnerships

- Florida Public Archaeology Network (FPAN)
 - Offers trainings for local governments and heritage groups
- Florida Department of State, Division of Historical Resources Bureau of Archaeological Research (BAR) and Bureau of Historic Preservation (BHP)
 - BHP's Florida Historic Cemetery Inventory

Cultural

- Portions of the human environment that express aesthetics, traditions, values, and customs
- Examples include:
 - Arts and crafts
 - Music
 - Dance or drama
 - Special events and festivals
 - Food
 - Tribal or ethnic customs
 - Language
 - Rituals



*Indian River Lagoon
National Scenic Byway*

Potential Partnerships

- Florida Department of State **Division of Arts and Culture (DAC)**
 - Houses the Florida Folklife Program
 - Online Cultural Tourism Toolkit available
 - Grant funding available
- **Visit Florida**
- **Florida Humanities**
 - Grant funding available
- Your local Arts and Culture Alliance, Main Street program, and Tourism Authority



The Ridge Scenic Highway

Historic

- Distinctive physical elements in the landscape, either natural or man-made, that reflect human actions in relation to past events, sites, or structures.
- Examples include:
 - Buildings
 - Native American habitations
 - Trails
 - Settlement patterns and landscapes



Old Florida Heritage Highway

Potential Partnerships

- **National Trust for Historic Preservation**
 - Grant funding available
 - Advocacy at nationwide level
- **Florida Department of State Division of Historical Resources (DHR)**
 - Grant funding available
- **Florida Trust for Historic Preservation**
 - Advocacy at statewide level
 - Determines the statewide 11 to Save
- Your local historical society or museum, Main Street program, or



William Bartram Scenic & Historic Highway

Natural

- Features that occur in a relatively undisturbed form in the natural environment
- Examples include:
 - Wetlands and marshes
 - Forests
 - Beaches
 - Native vegetation



Ormond Scenic Loop & Trail

Potential Partnerships

- Florida Department of Environmental Protection (FDEP)
 - Houses Trail Towns Program
- National Parks Service (NPS)
- Florida Wildflower Foundation
- Florida Wildlife Corridor Foundation
- 1000Friends of Florida
- Your local Keep America Beautiful affiliate and environmental/conservation organizations

Pensacola Scenic Bluff Highway

Recreational

- Active or passive outdoor recreational activities directly dependent upon the natural elements of the landscape
- Examples include:
 - Boating
 - Fishing
 - Hiking
 - Wildlife viewing
 - Biking
 - Canoeing



Green Mountain Scenic Byway

Potential Partnerships

- Florida Department of Environmental Protection (FDEP)
 - Houses Trail Towns Program
- National Recreation and Park Association (NRPA)
- National Recreation Foundation (NRF)
- AARP's Livable Communities
 - Grant funding available
 - Variety of online toolkits
- Your local Parks and Recreations Division, recreational organizations, and recreational businesses

Scenic

- Natural or manmade features that give remarkable character to the visual landscape
- Examples include:
 - Lookout points
 - Roadways that run along the coast, through forests, or near areas otherwise not accessed



Scenic Sumter Heritage Byway

Potential Partnerships

- Florida Department of Environmental Protection (FDEP)
- Audubon Florida
- Scenic America
 - Advocacy on nationwide level
- Your local Parks and Recreations Division and scenic/conservation organizations

Martin Grade Scenic Highway

Who have you
successfully partnered
with?