

# 2024 FSHP Annual Meeting

March 6 - 8, 2024

*Byway Success  
through  
Partnership*



*Green Mountain Scenic Overlook*

Green Mountain Scenic Byway &  
Lake County Office of Parks and Trails  
*Long - Term Partners*

*“And other partners”*



# Overview

- Introduction
- Planning Connections
- Creating a Destination
- By the Numbers
- Future





Mount  
Dora



to



Winter  
Garden



# Green Mountain Scenic Byway

## Timeline

2001- Intent

2005- Approval

2006- Incorp.

2007- 501(c)3



# Lake County Parks & Trails

- Oversee Trail Planning and Development
- 2018 Parks, Recreation, & Trails Master Plan Update
- Maintain Twelve (12) Miles of Multi-Use Trail on the Byway
- Manage Three (3) Properties on the Byway
  - Recreation Access
  - Boating Access
  - Restoration
- Coordinate with Other Byway Partners to Develop Additional Recreational Opportunities Along the Byway



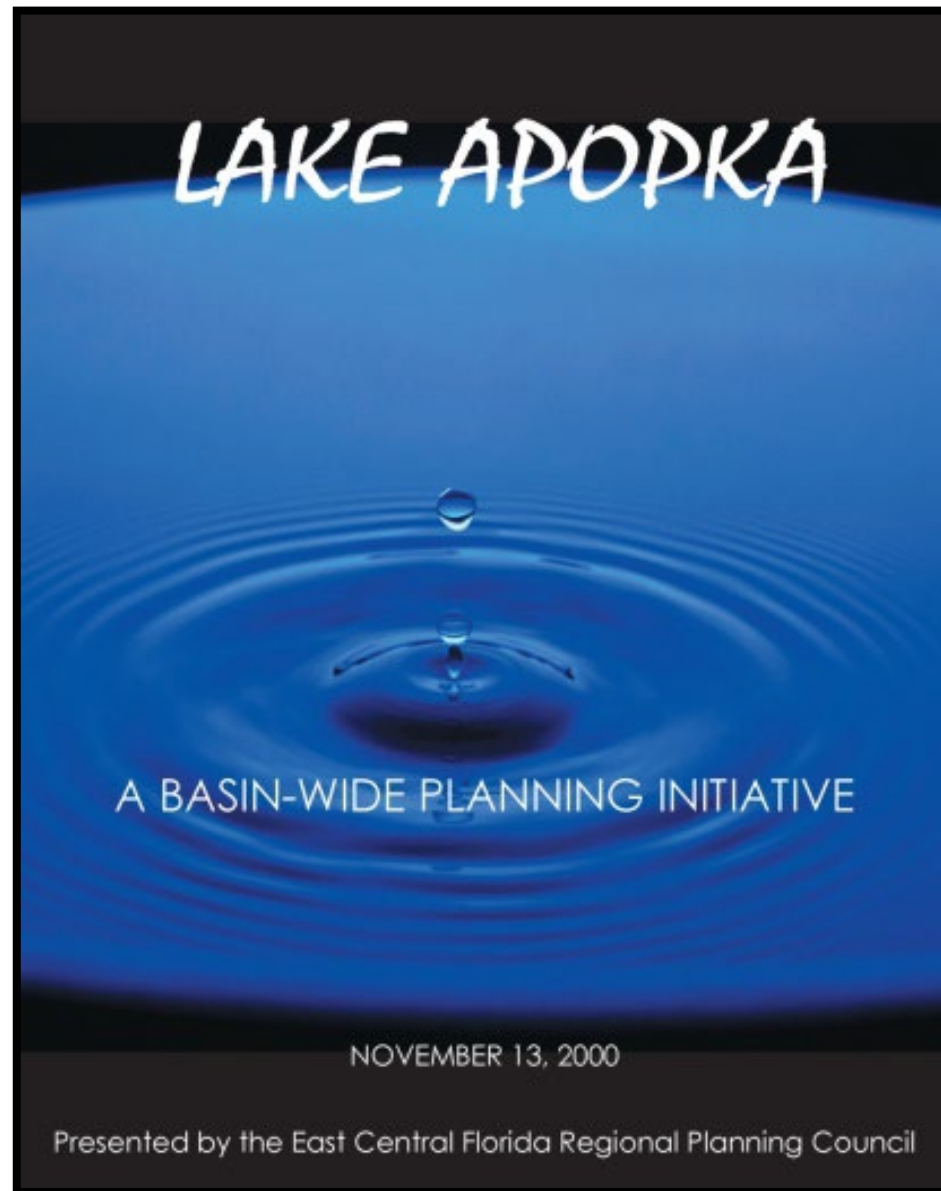


# Byway Partners





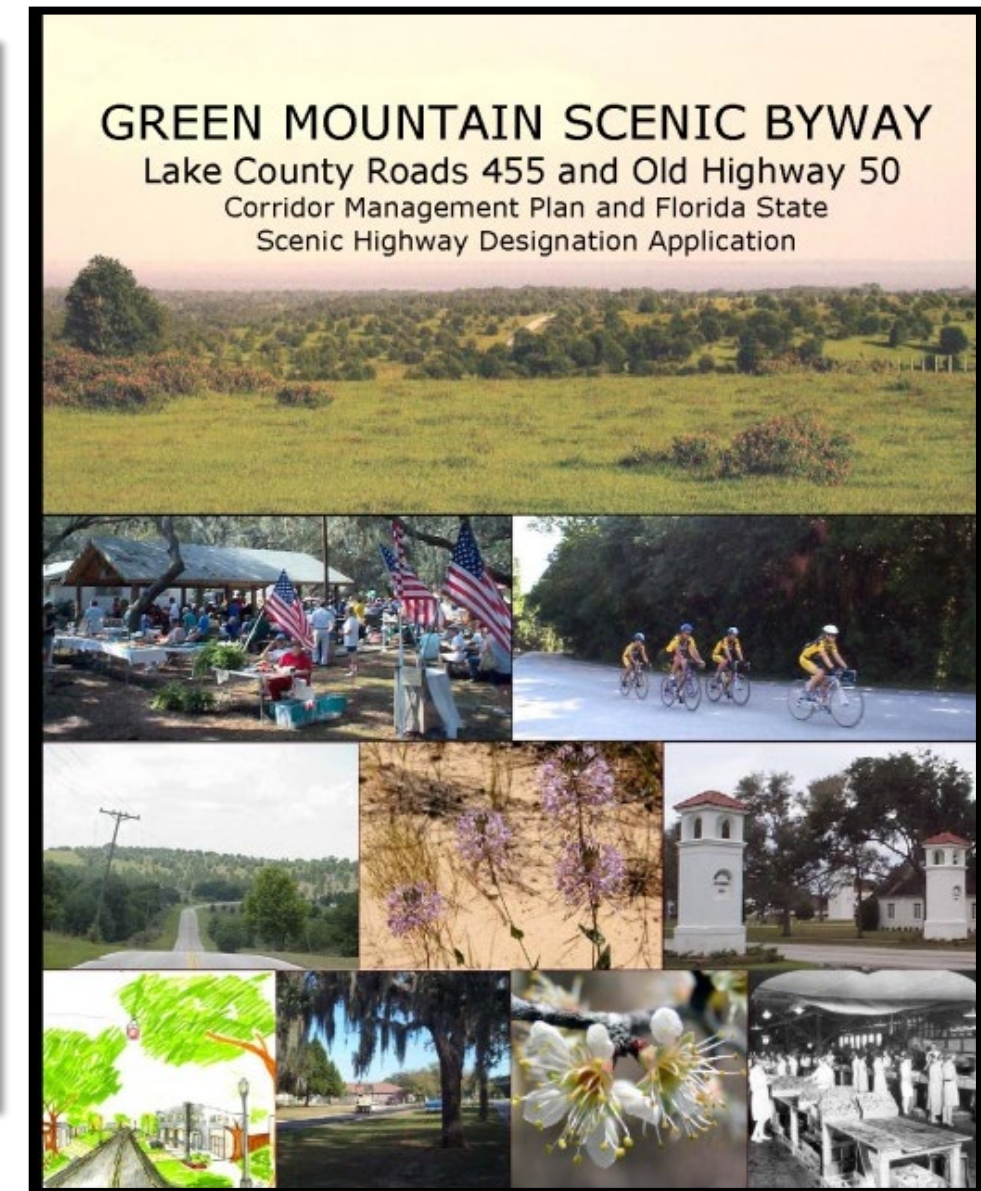
# Planning



2000



2002



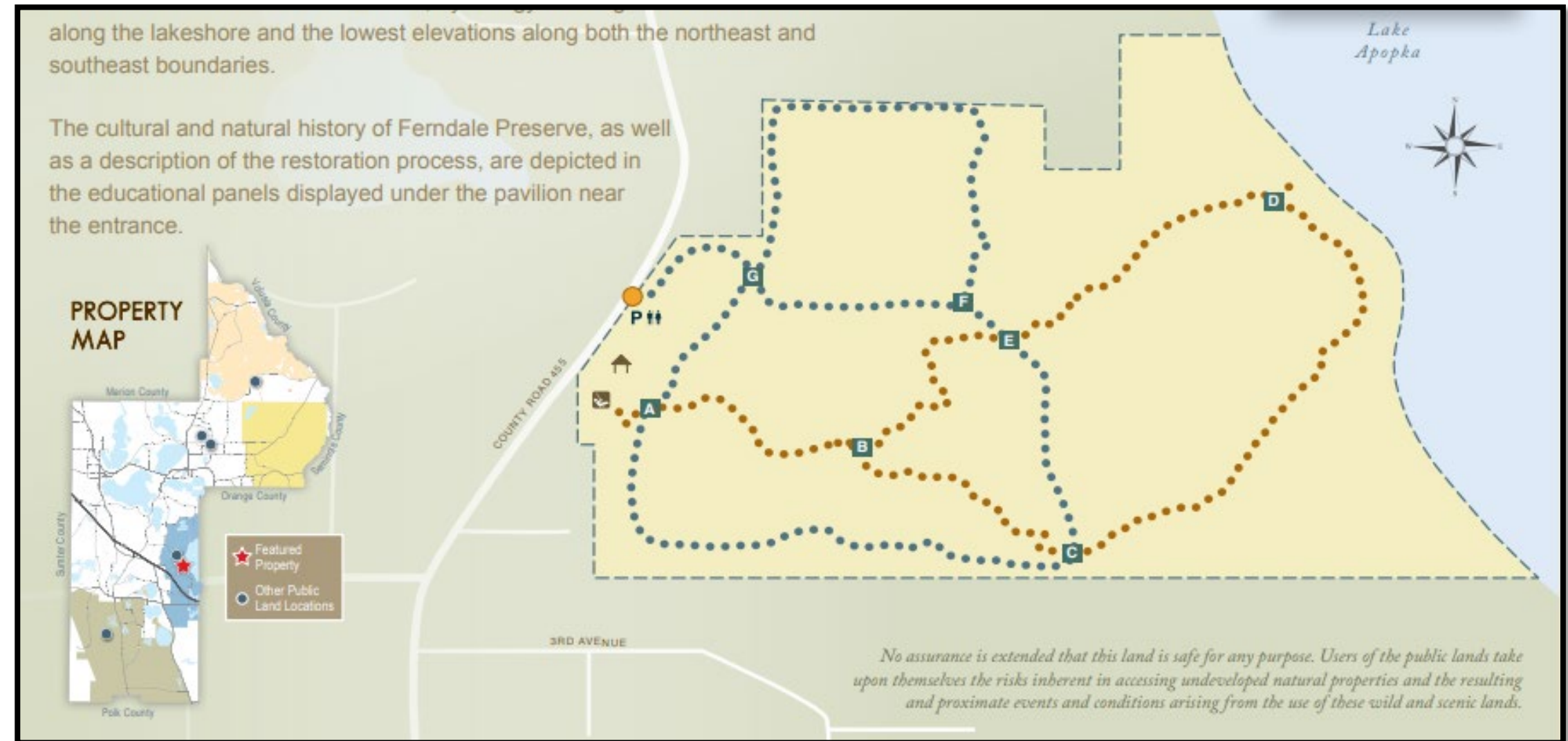
2003



# First Partnership

## Ferndale Preserve

- 192 Acres
- \$4 Million
- **PARTNERS**
  - Lake County
  - St. Johns River Water Management District
  - Trust for Public Lands
  - Florida Communities Trust

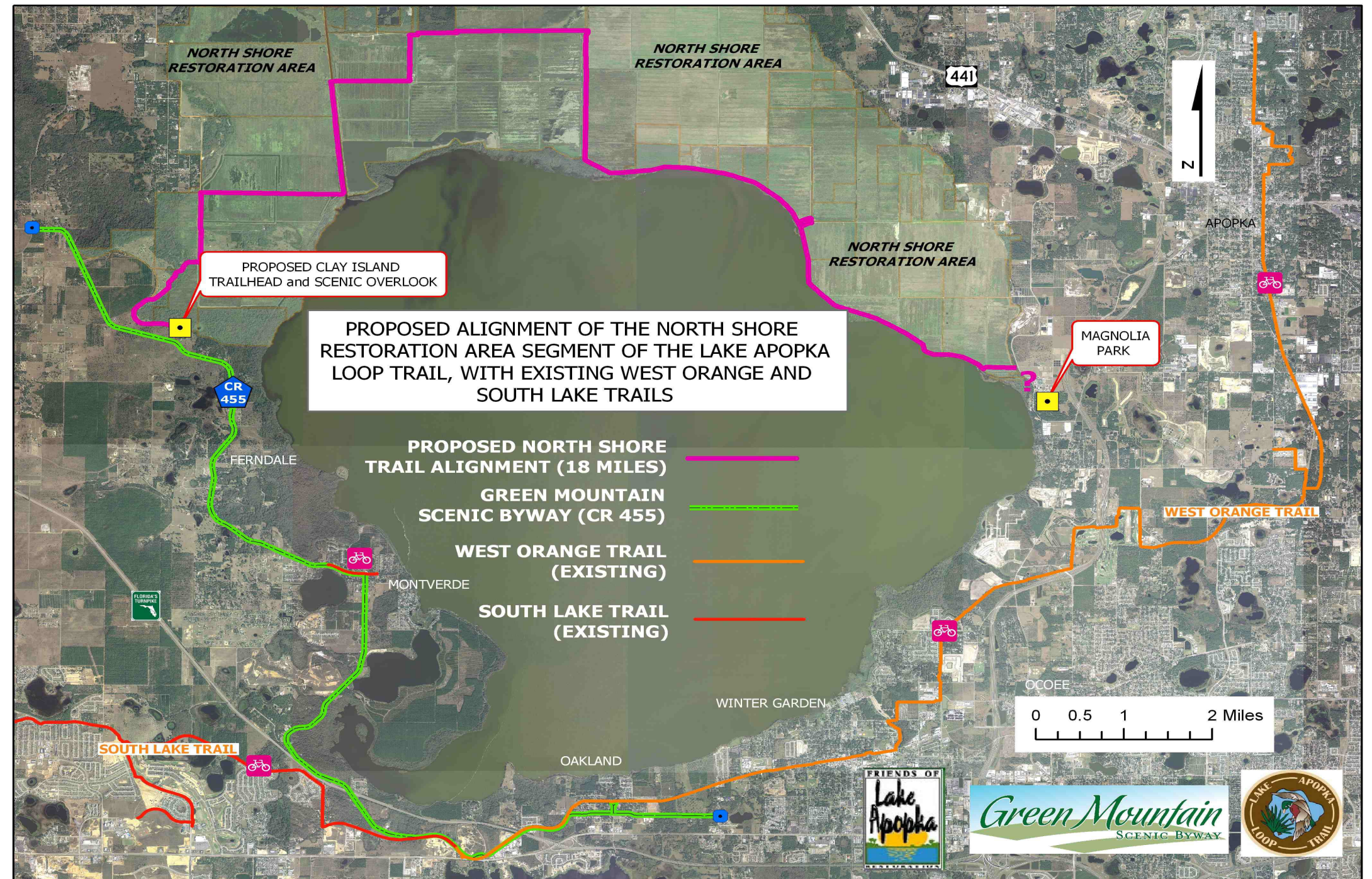


**TRUST FOR PUBLIC LAND®**



# Lake Apopka North Shore

- Pesticide Remediation
- Lake Clean-up
- Limited Access
- Convert Levies to Trails
- Vision of “Loop Trail” Around Lake Apopka
- Strong Public Desire for Access



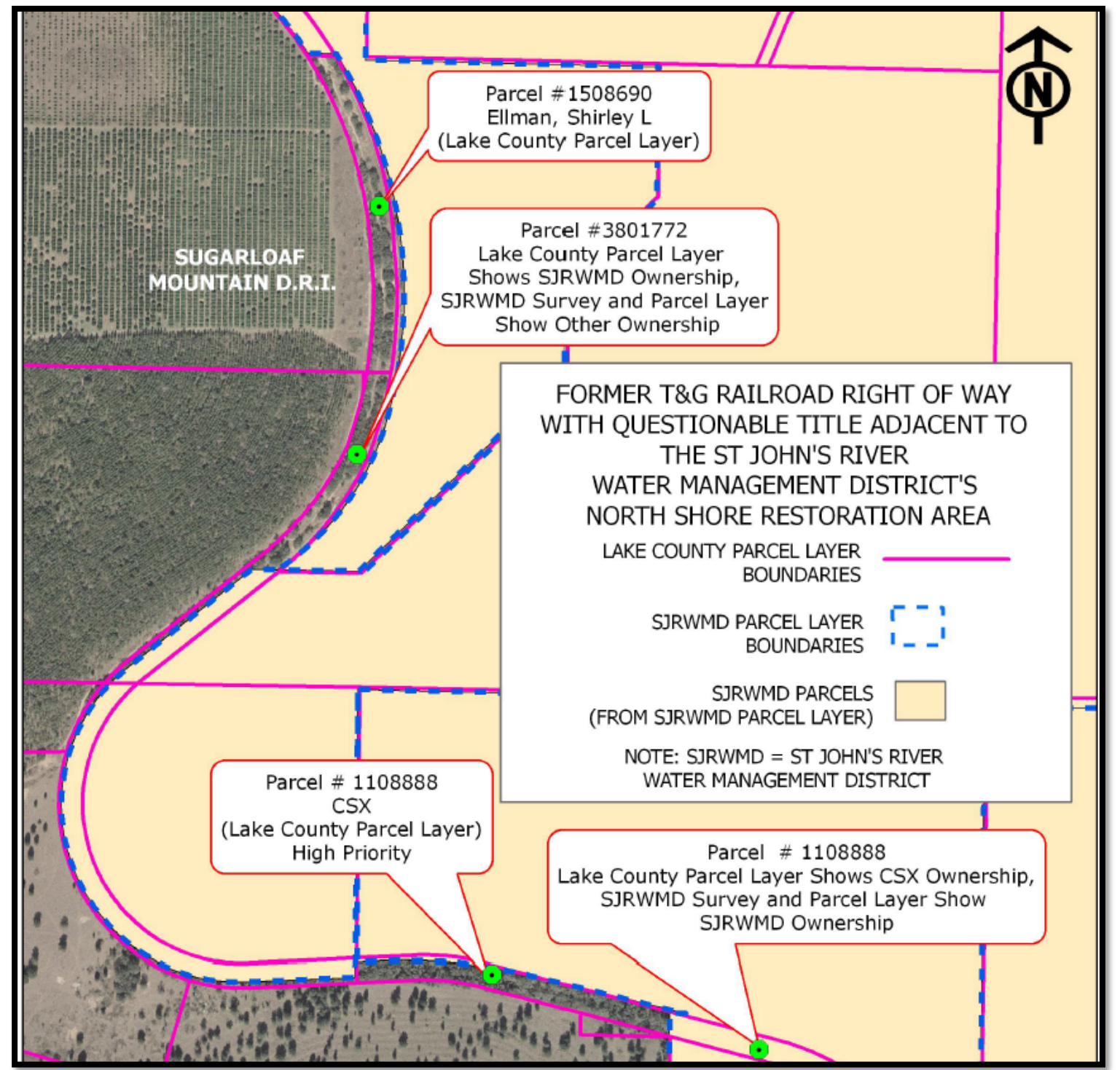
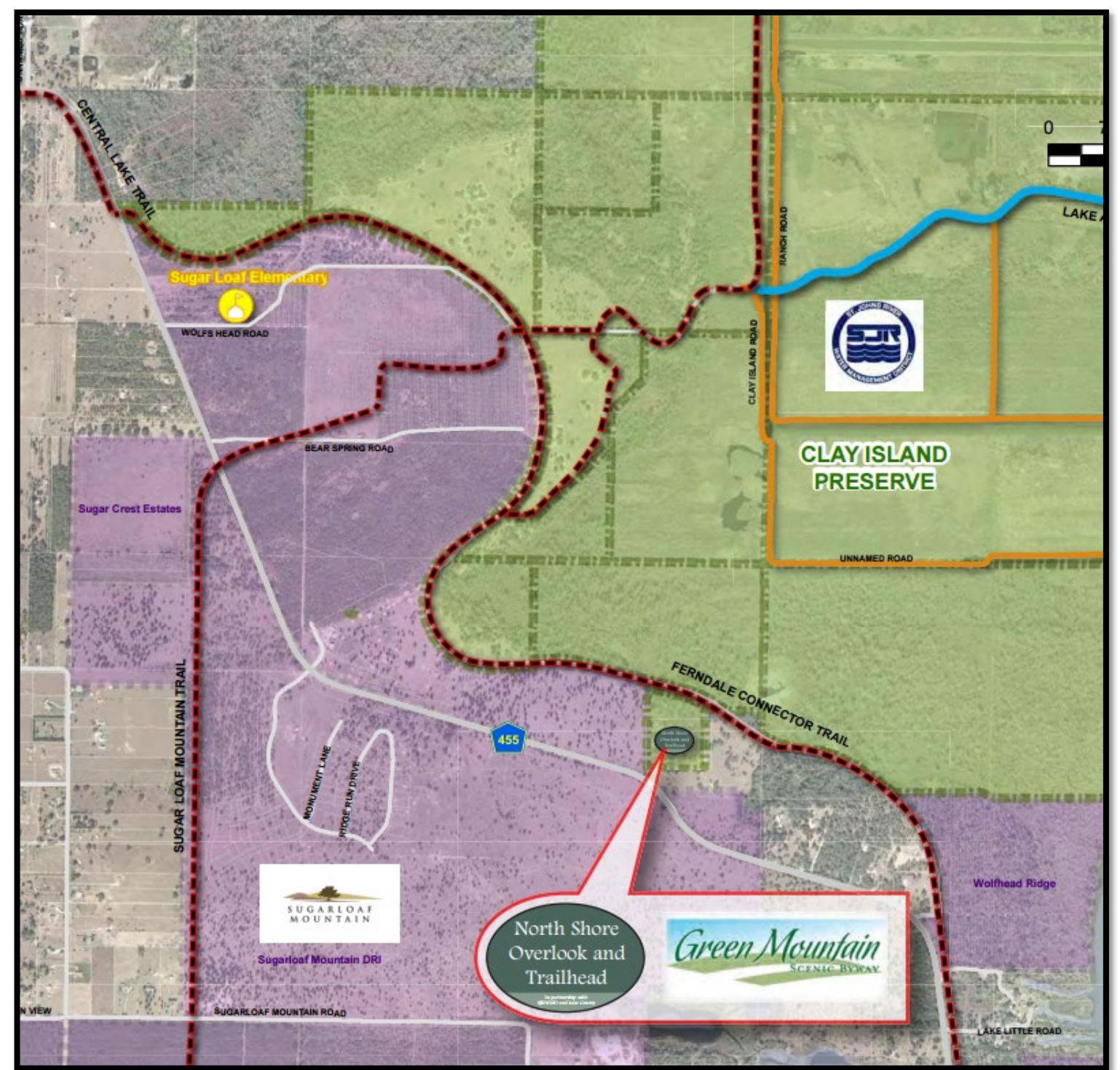
# Planning Connections

- Sept. 8, 2008 Meeting with Orange County
- Sept. 24, 2008 Kickoff Meeting “Clay Island” Trailhead
- Oct. 28, 2008 OCBOCC Vote
- Nov. 7, 2008 Site Visit Magnolia Park
- Dec. 3, 2008 Design Charette “Clay Island” Trail



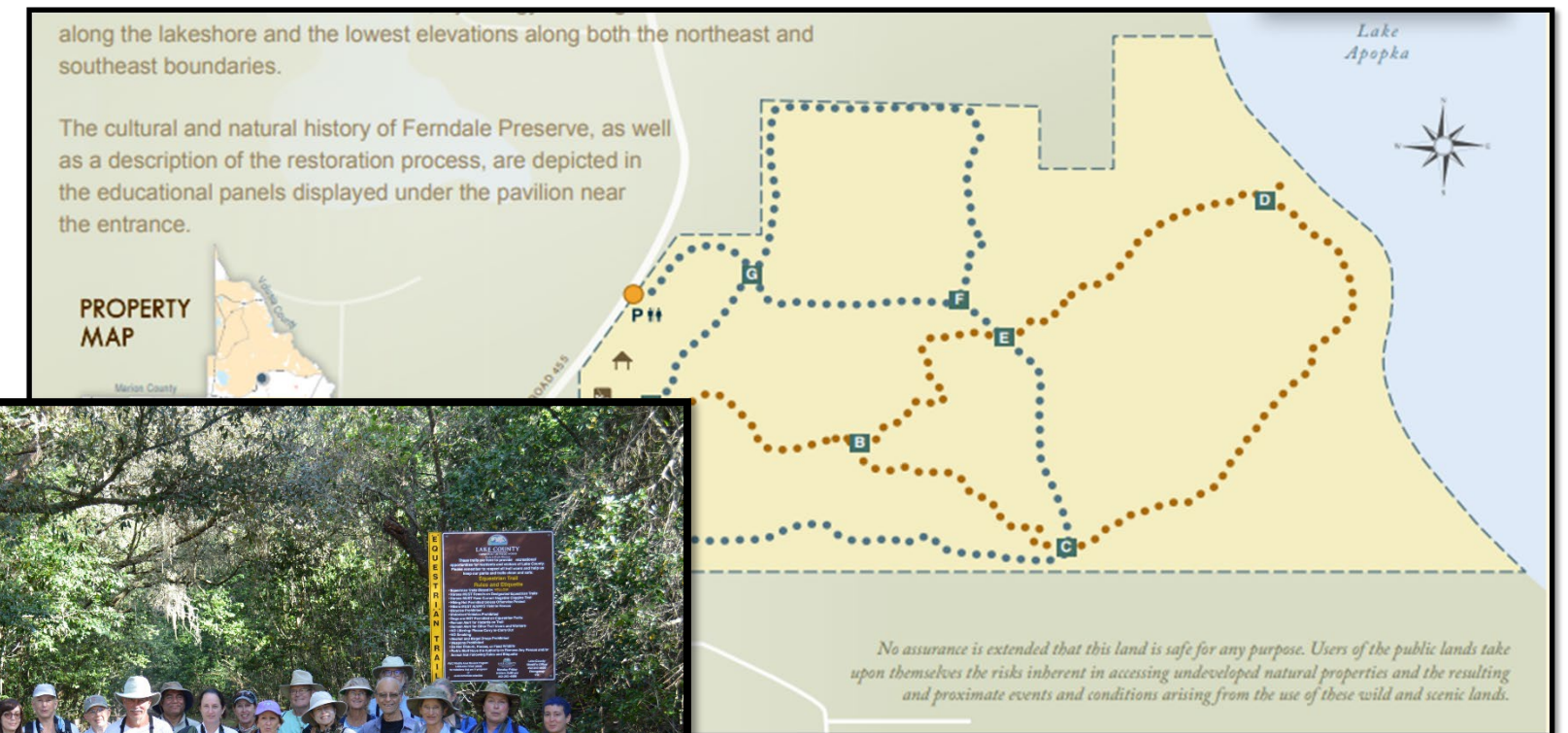


# Planning Connections



# Creating a Destination

- Restoration
- Recreation Development



Ferndale Preserve



# Creating a Destination

The image shows the cover of a project summary report. On the left is a dark green vertical sidebar containing logos for the State of Florida Department of Transportation District 5, Green Mountain Scenic Byway, Inwood consulting engineers, and a red 'G' logo. The main title "NORTH SHORE OVERLOOK AND TRAILHEAD PROJECT SUMMARY" is at the top right. Below the title is a landscape sketch of a wooden overlook with a tower. The background is a photograph of a lake and trees. The date "AUGUST 2009" is in the bottom right corner.

STATE OF FLORIDA  
DEPARTMENT OF TRANSPORTATION  
DISTRICT 5

Green Mountain  
SCENIC BYWAY

Inwood  
consulting engineers

G

NORTH SHORE OVERLOOK AND TRAILHEAD  
PROJECT SUMMARY

AUGUST 2009



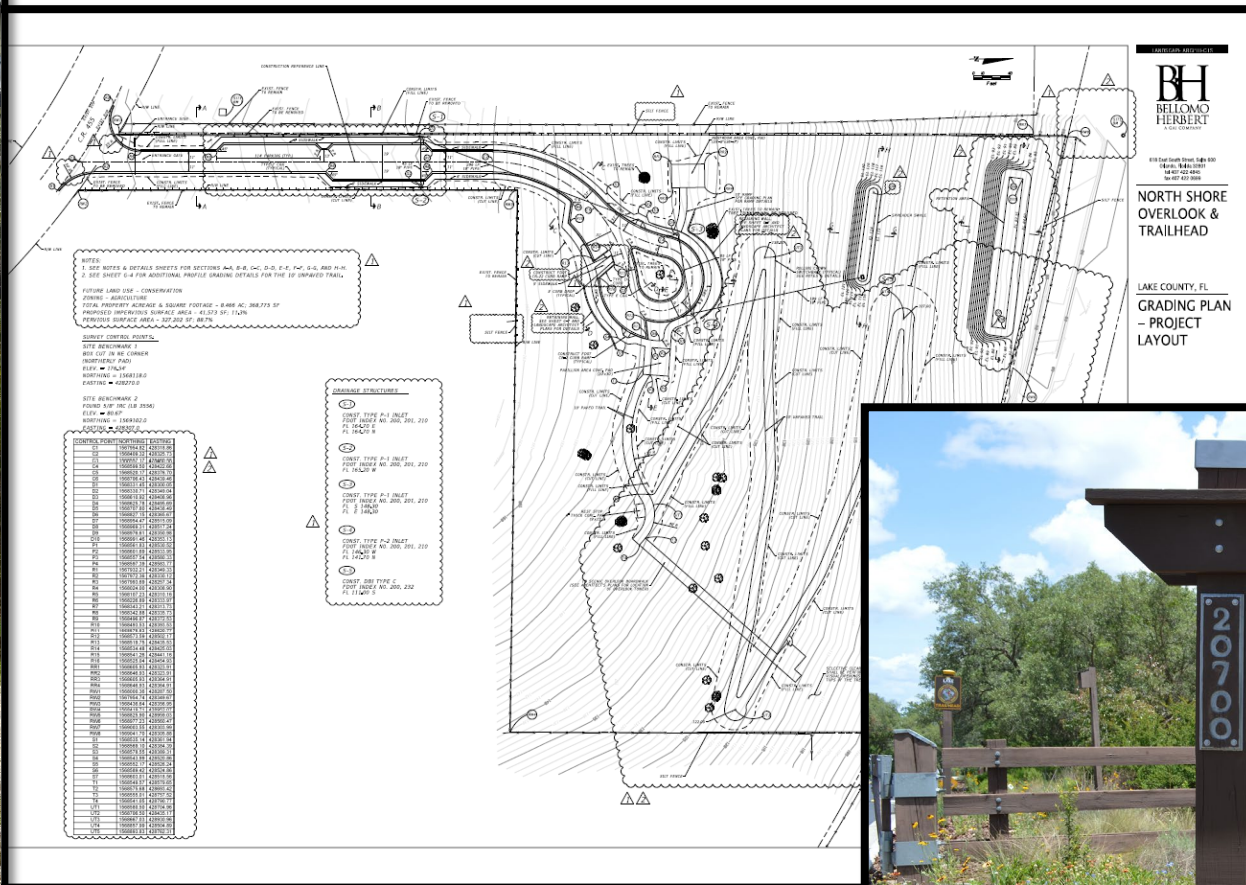
2024 FSHP Annual Meeting  
March 6- 8, 2024

# Creating a Destination



Lake Apopka Loop Trail  
May 15, 2010

# Creating a Destination



Green Mountain Scenic Overlook & Trailhead

# Creating a Destination

## Recreation Opportunities

- Hiking
- Biking
- Equestrian
- Birding
- Wildlife Viewing
- Photography
- Fishing
- Paddling

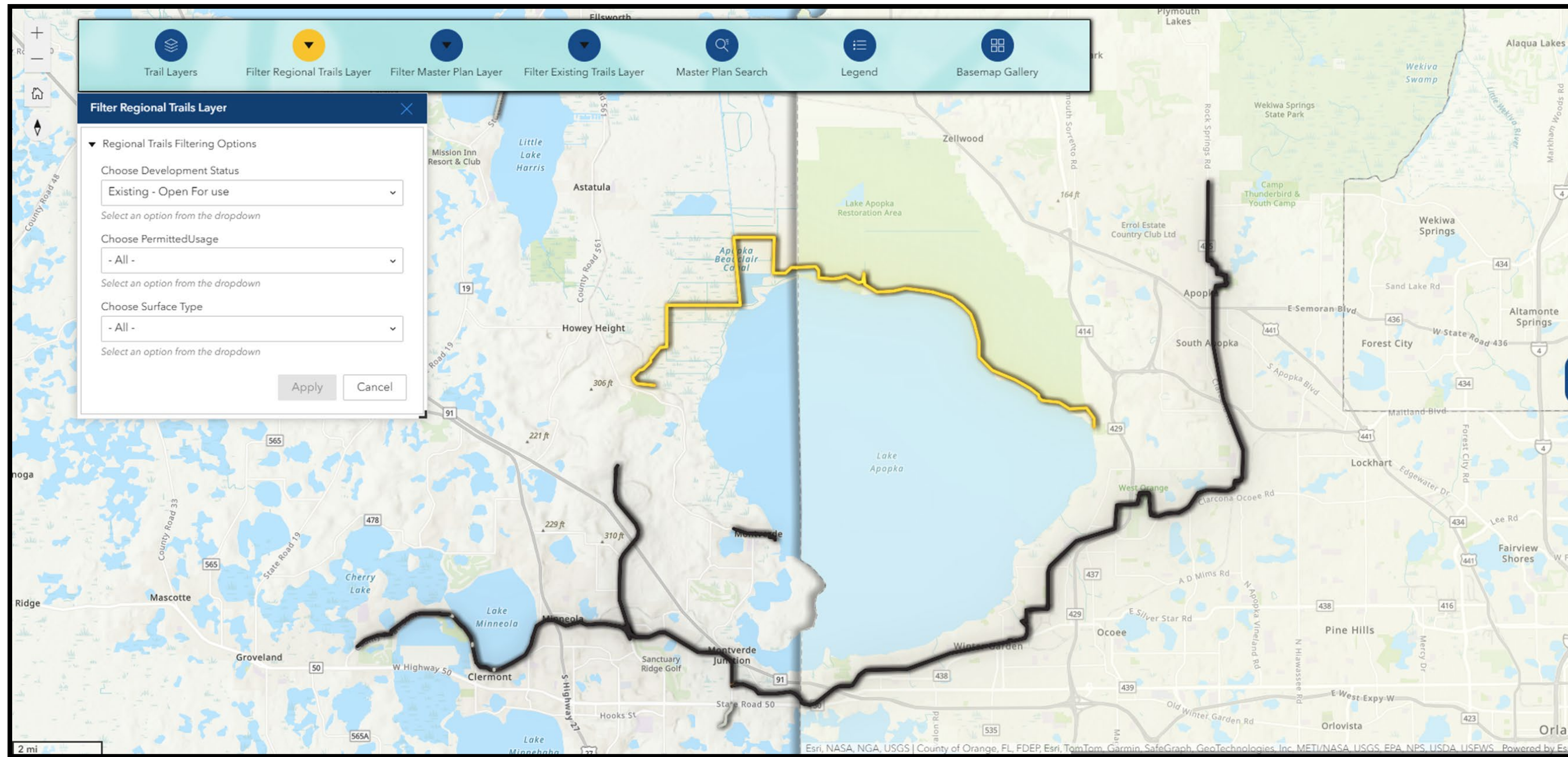


Lake Apopka Loop Trail





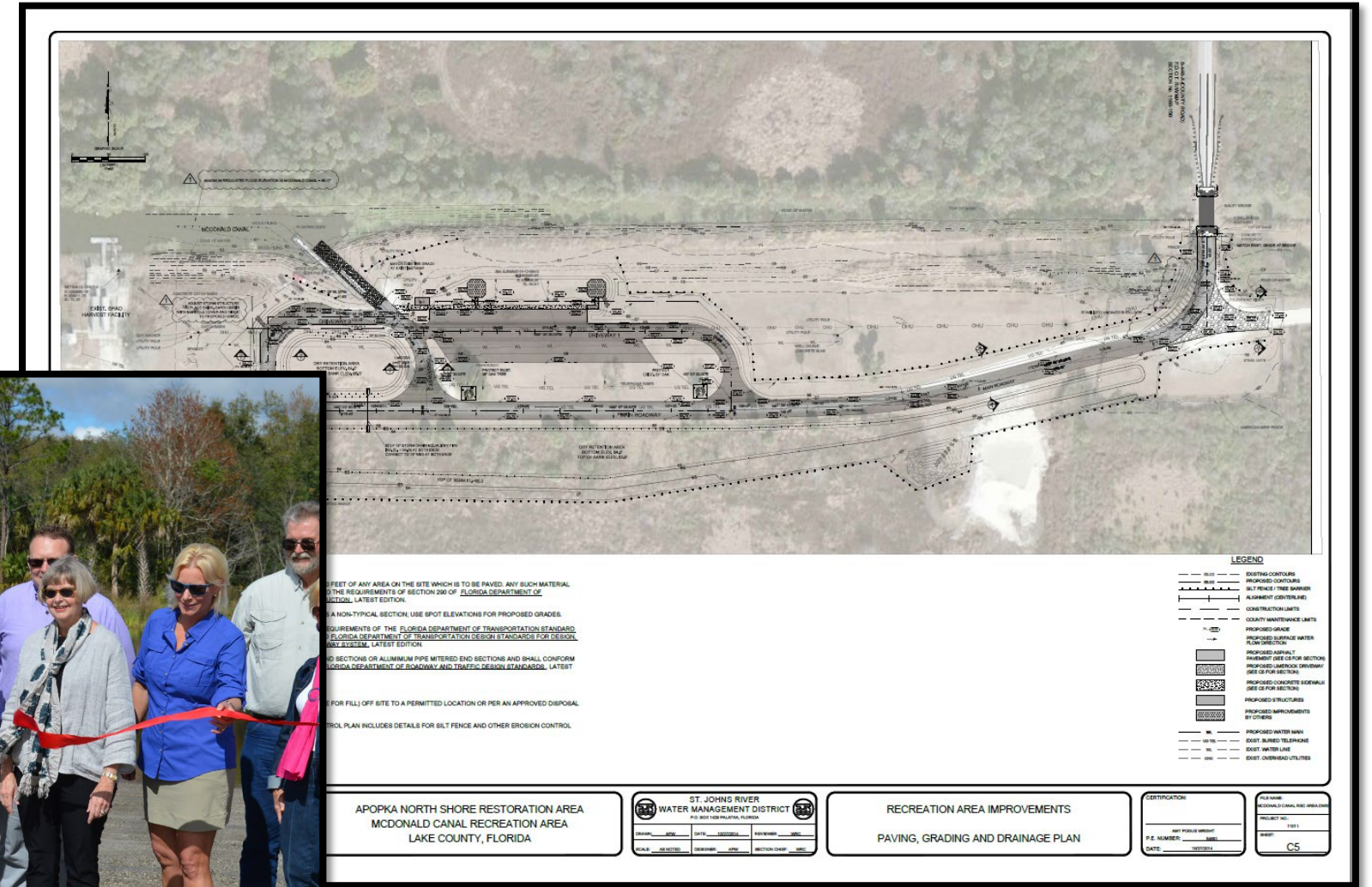
# Creating a Destination



Lake Apopka Loop Trail



# Creating a Destination



## McDonald Canal Boat Ramp



# Creating a Destination

**Purple Gallinule**  
MEASUREMENTS (BOTH SEXES):  
Length: 13.0-14.6 in (33-37 cm)  
Weight: 7.3-10.3 oz (203-291 g)  
Wingspan: 21.6-22.1 in (55-56 cm)

IDENTIFICATION: Adults are a medley of purplish head and body, greenish wings and back, a yellow-tipped red bill, baby blue frontal shield, and bright yellow legs and feet. Juveniles show very little hint of these colors, being mostly brown above, khaki below, with much duller bill and legs. Immatures acquire their colors gradually in their first year.

HABITAT: Purple Gallinules are almost always found near freshwater, even during migration. For nesting, they favor freshwater ponds with emergent vegetation, and the species has adapted well to many human-altered environments.

**MAP LEGEND**

- County Road
- State Road
- U.S. Highway
- Conservation Areas
- Lakes/Rivers
- Blueway Marker
- Roads

**PROPERTY OWNERSHIP**

- Lake County
- City of Montverde
- St. Johns River Water Management District

**Blueway Markers**

Lake Apopka Run is 9 miles one way, 18 miles round trip.

LAKE COUNTY, FL  
**BLUEWAYS**

LAKE APOPKA RUN

Paddle your way through all of Lake County's unique Blueways:

- Blue Creek Run
- Golden Triangle Run
- Helena Run
- Lake Apopka Run
- Lake Eustis Run
- Lake Griffin Run
- Lake Harris Run
- Palatlakaha Run
- St. Francis Run
- Stagger Mud Lake Run

**Parks & Water Resources**  
27351 State Road 19,  
Tavares, FL 32778  
352-253-4950  
lakecountyfl.gov/parks

**PADDLING TRAIL MAP**

VI - 1/2024

Lake Apopka Blueway



# By the Numbers

## Lake Apopka Wildlife Drive (LAWD)

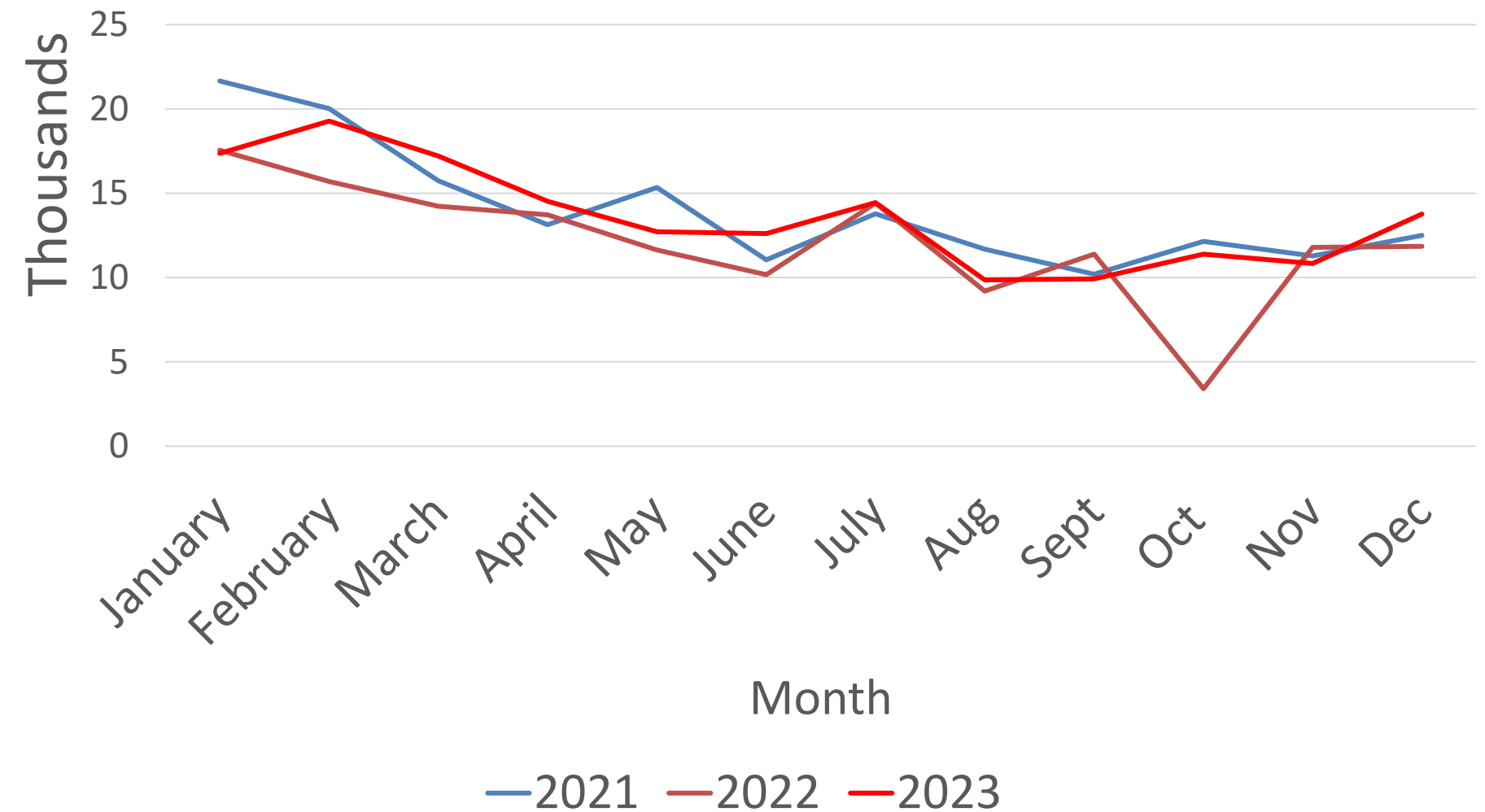
Three Year Total 477,516

Avg Yearly Total 159,172

Avg Daily\* Total 995

\*Open Friday-Sunday & Federal Holidays

LAWD Attendance by Year

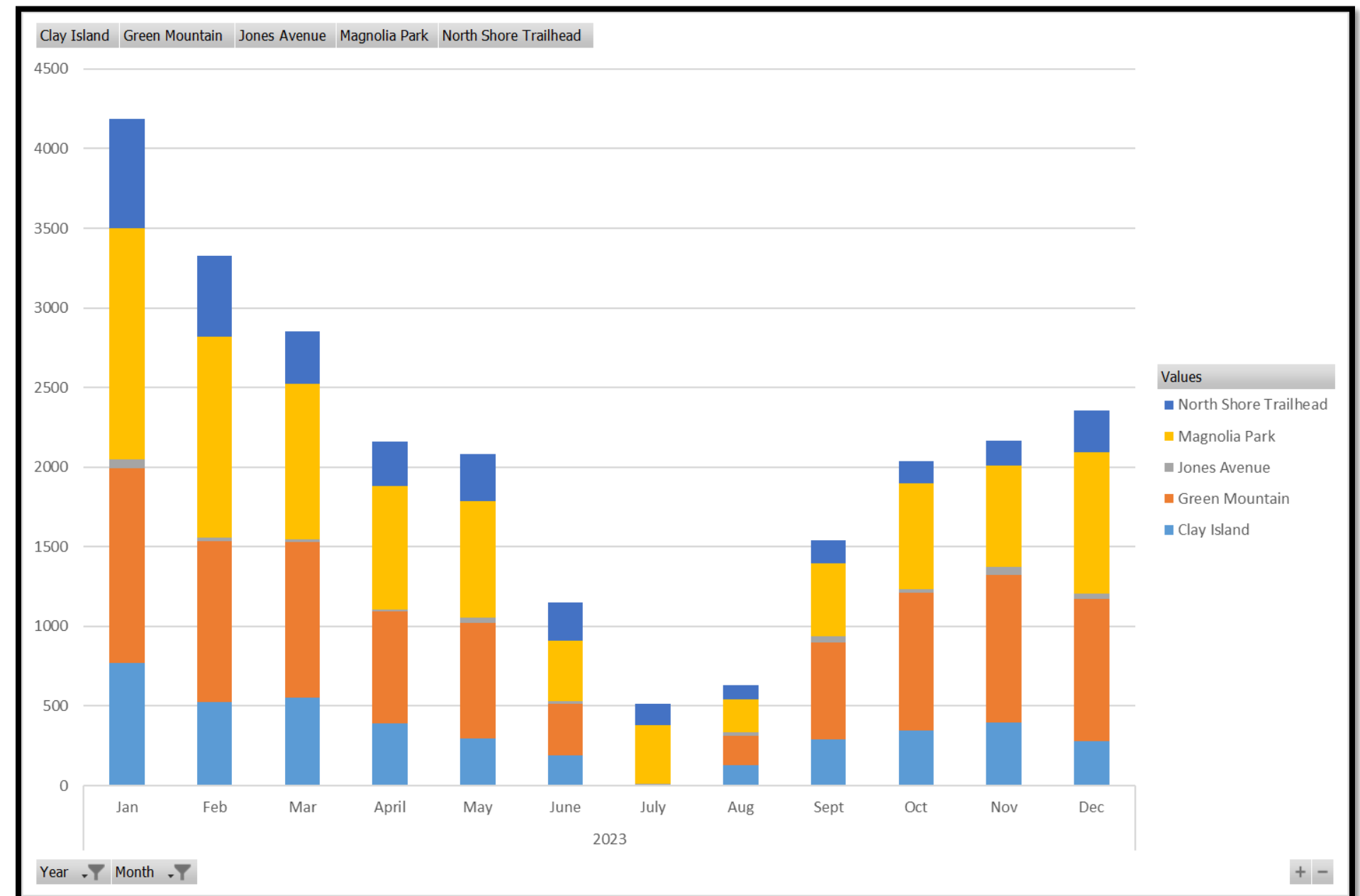




# By the Numbers

## Lake Apopka Loop Trail Bicycle & Pedestrian Usage 2023

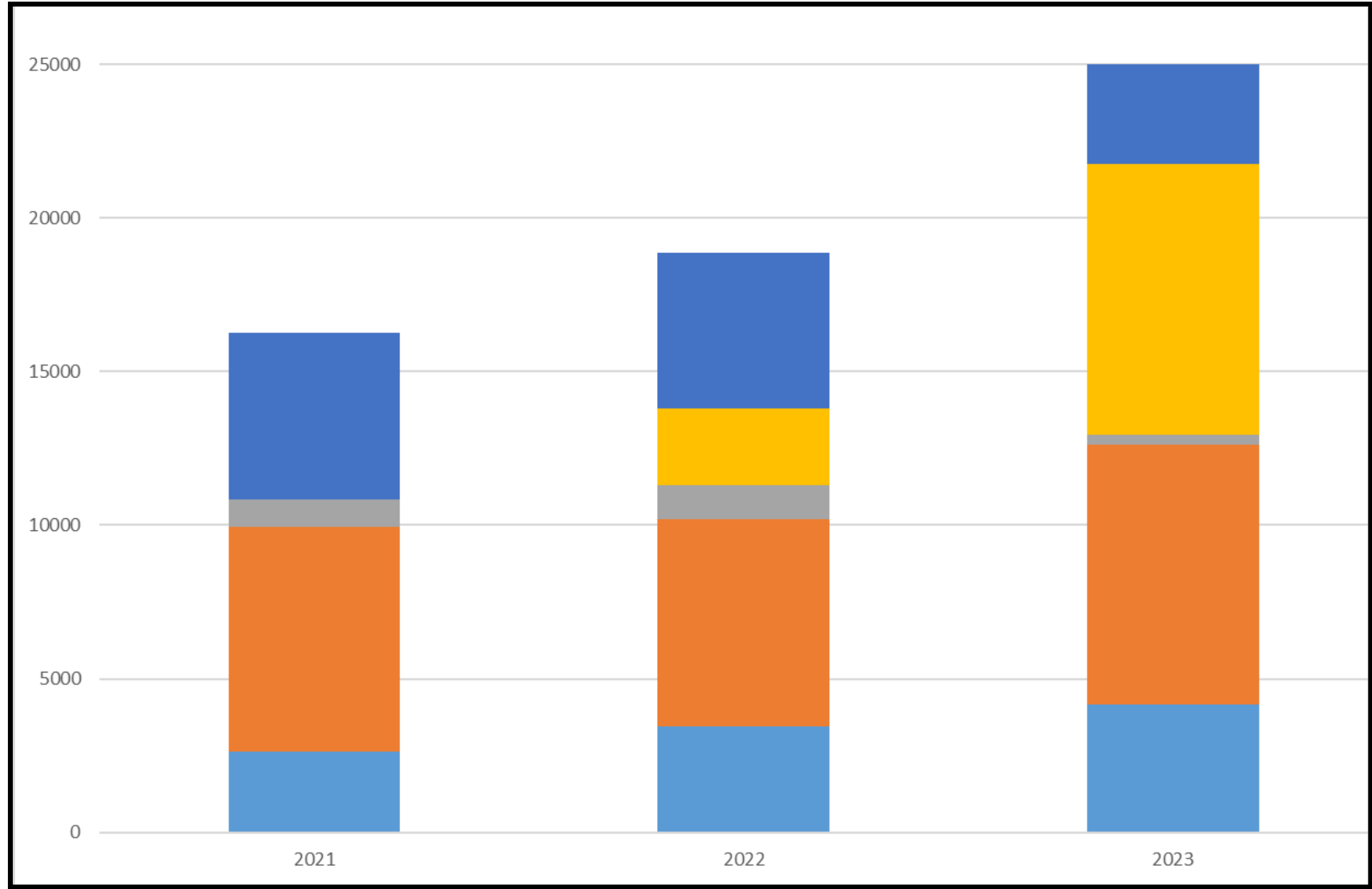
- Clay Island
  - 4163
- Green Mountain Connector
  - 8444
- Jones Ave. Stormwater Park
  - 347
- Magnolia Park Gate
  - 8789
- North Shore Trailhead
  - 3269





# By the Numbers

- Green Mountain Scenic Byway 
- North Shore Trailhead 
- Clay Island 
- Magnolia Park 



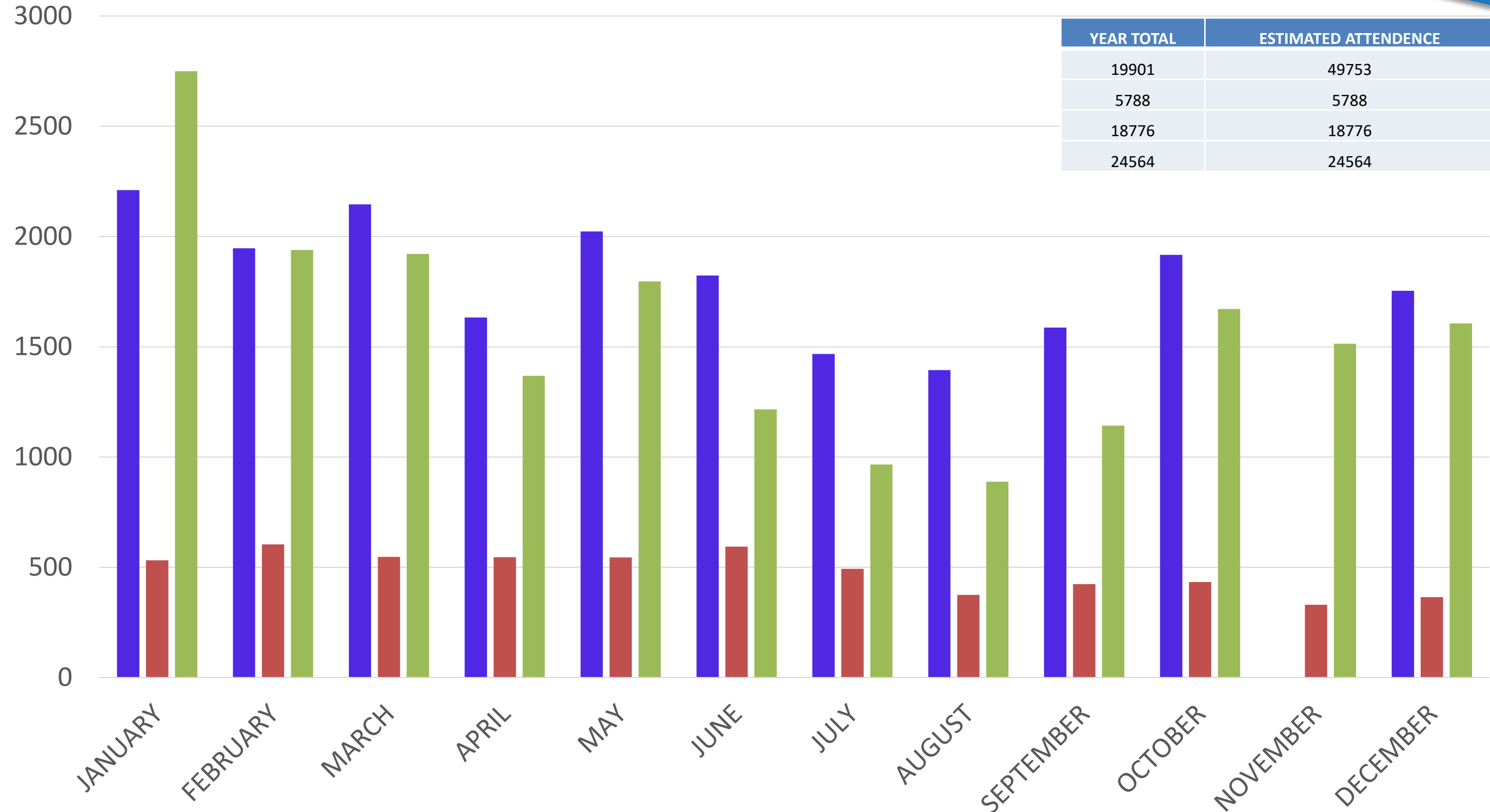


# By the Numbers

Green Mountain Scenic Overlook & Trailhead 2023

## Scenic Overlook 2023

- Vehicles
- Bicycles
- Pedestrians



YEAR TOTAL	ESTIMATED ATTENDANCE
19901	49753
5788	5788
18776	18776
24564	24564



# By the Numbers

## Visitors Per Year

- Ferndale Preserve
  - ~44,000
- McDonald Canal Boat Ramp
  - ~42,000
- Green Mountain Scenic Overlook & Trailhead
  - ~50,000
- South Lake Trail (County Line)
  - ~80,000

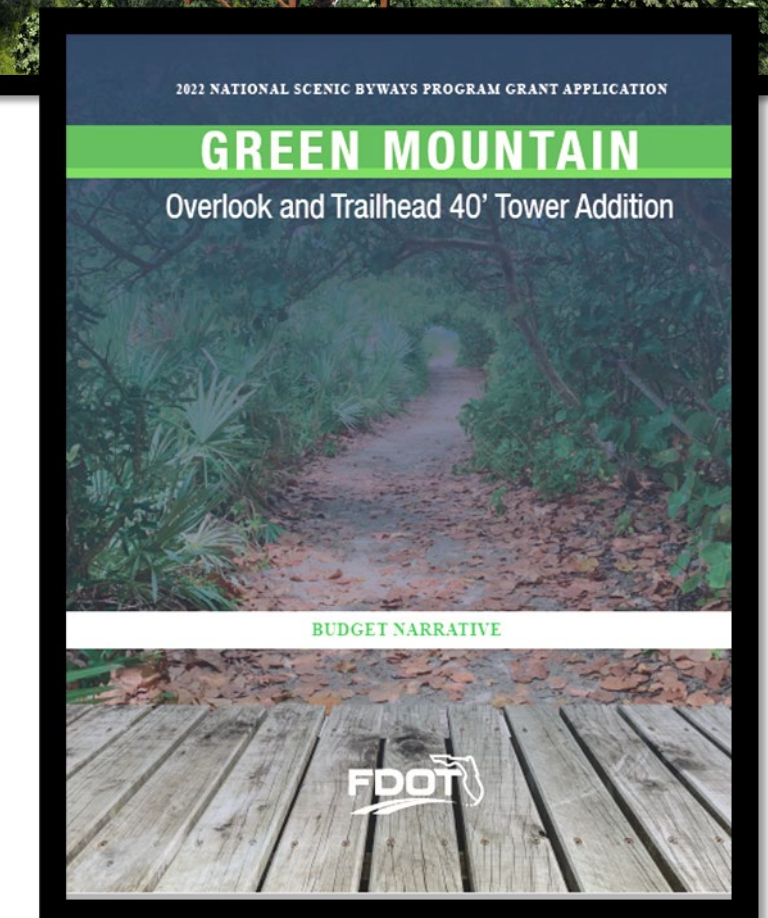




# Future

## Green Mountain Second Tower

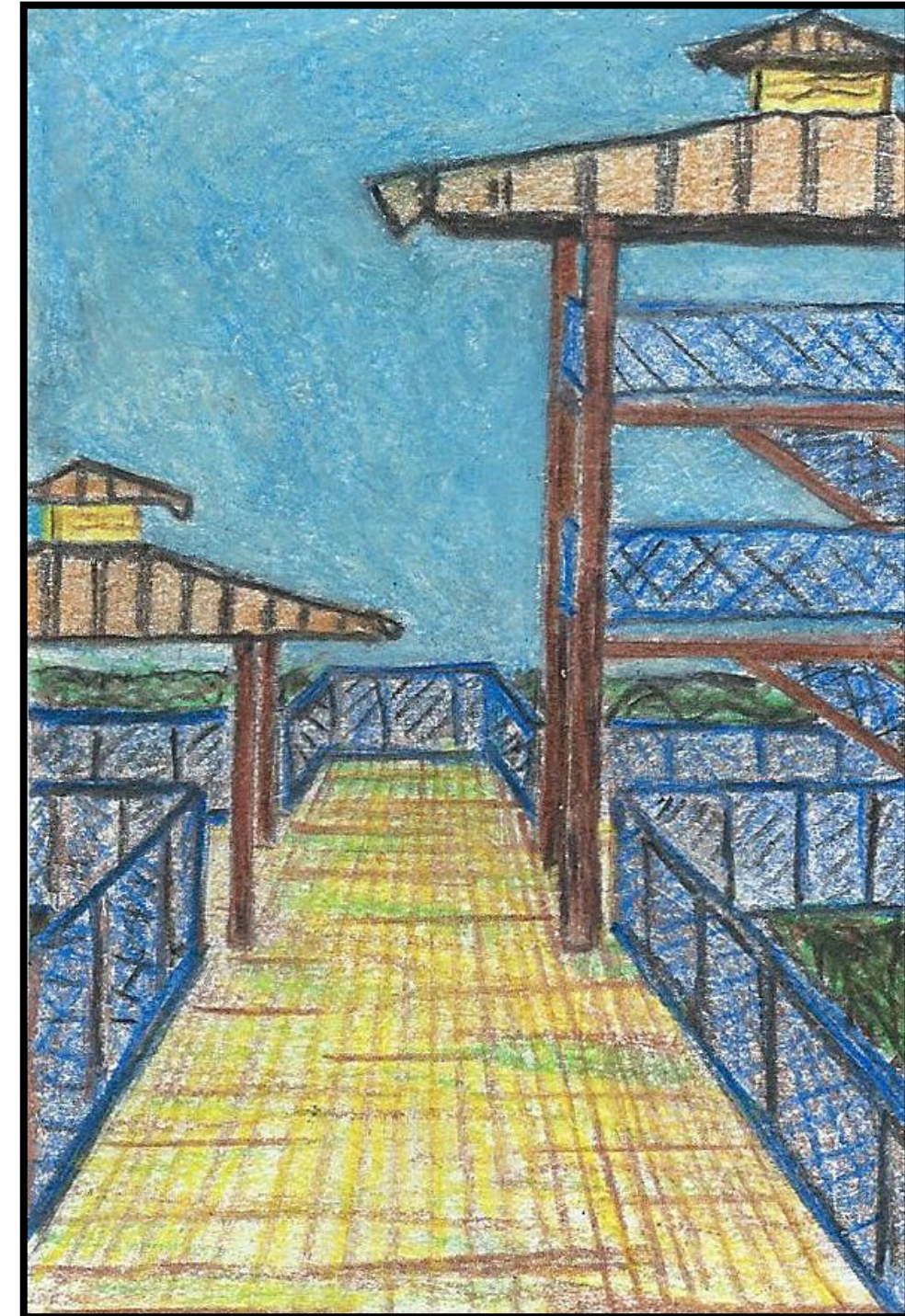
- ~80' Tall
- ~200' Above Sea Level
- National Scenic Byway Grant
  - \$650,000.00
  - \$650,000.00 Match from Lake County
- FDOT & Lake County





2024 FSHP Annual Meeting  
March 6- 8, 2024

# Future





# Future



**GREEN MOUNTAIN SCENIC OVERLOOK  
& TRAILHEAD SECOND OBSERVATION  
TOWER**

MINNEOLA, FLORIDA



**PROJECT CONTACTS:**

<b>OWNER</b>	<b>ARCHITECT</b>	<b>STRUCTURAL ENGINEERING</b>	<b>MECHANICAL, ELECTRICAL, FIRE PROTECTION ENGINEERING</b>
LAKE COUNTY BOARD OF COUNTY COMMISSIONERS PARKS & WATER RESOURCES P.O. BOX 7888 TAVELAND, FLORIDA 32778-7888 PHONE: 407-884-4400 CONTACT: ROBERT BONGALA, DISTRICT DIRECTOR EMAIL: ROBERT.BONGALA@LAKECOUNTYFL.GOV	HOWELL STODOL ARCHITECTURE, LLC 1111 W. ANDERSON STREET CORONA, FL 32709 PHONE: 407-874-2446 FAX: 407-874-2446 CONTACT: JEFF POWELL, AIA, ARCHITECT EMAIL: JEFF@HOWELLSTODOL.COM WWW.HSARCH.COM	TFC ENGINEERING 870 SOUTH WINDY CORONA, FL 32709 PHONE: 407-874-0874 FAX: 407-874-0874 CONTACT: DAVID WHELE, P.E. EMAIL: DWHELE@TFC-ENG.COM WWW.TFC-ENG.COM	TFC ENGINEERING 870 SOUTH WINDY CORONA, FL 32709 PHONE: 407-874-0874 FAX: 407-874-0874 CONTACT: JIM MILLON, P.E. EMAIL: JIM@TFC-ENG.COM WWW.TFC-ENG.COM

**LAKE COUNTY BOARD OF COMMISSIONERS**

DISTRICT 1 - DOUGLAS SHIELDS  
DISTRICT 2 - SEAN PARKS  
DISTRICT 3 - KIRBY SMITH  
DISTRICT 4 - LESLIE CAMPIONE  
DISTRICT 5 - JOSH BLAKE

**SHEET DATA**

**1-ARCHITECTURAL**

Sheet 1: GENERAL NOTES

Sheet 2: FOUNDATION

Sheet 3: STRUCTURE

Sheet 4: ROOF

Sheet 5: EXTERIOR FINISHES

Sheet 6: INTERIOR FINISHES

Sheet 7: MECHANICAL

Sheet 8: ELECTRICAL

Sheet 9: PLUMBING

Sheet 10: STRUCTURAL

**SITE ADDRESS:**

3976 SOUTH PG 455  
MINNEOLA, FL 32752

PARCEL ID: 21212600

ALT KEY: 1411982

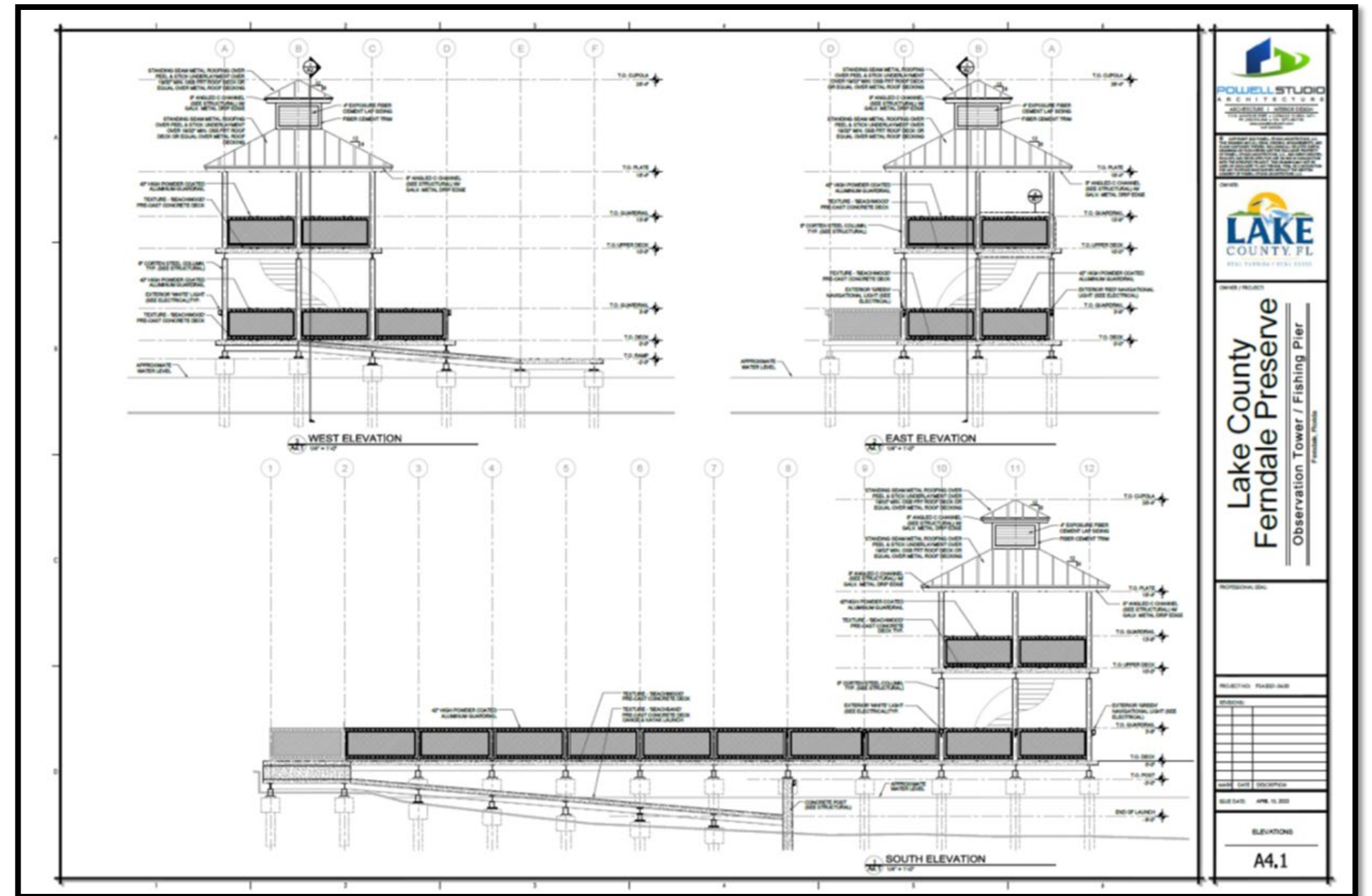
LEGAL DESCRIPTION



# Future

## Ferndale Preserve Fishing Pier

- Two Stories
- ADA Paddle Launch

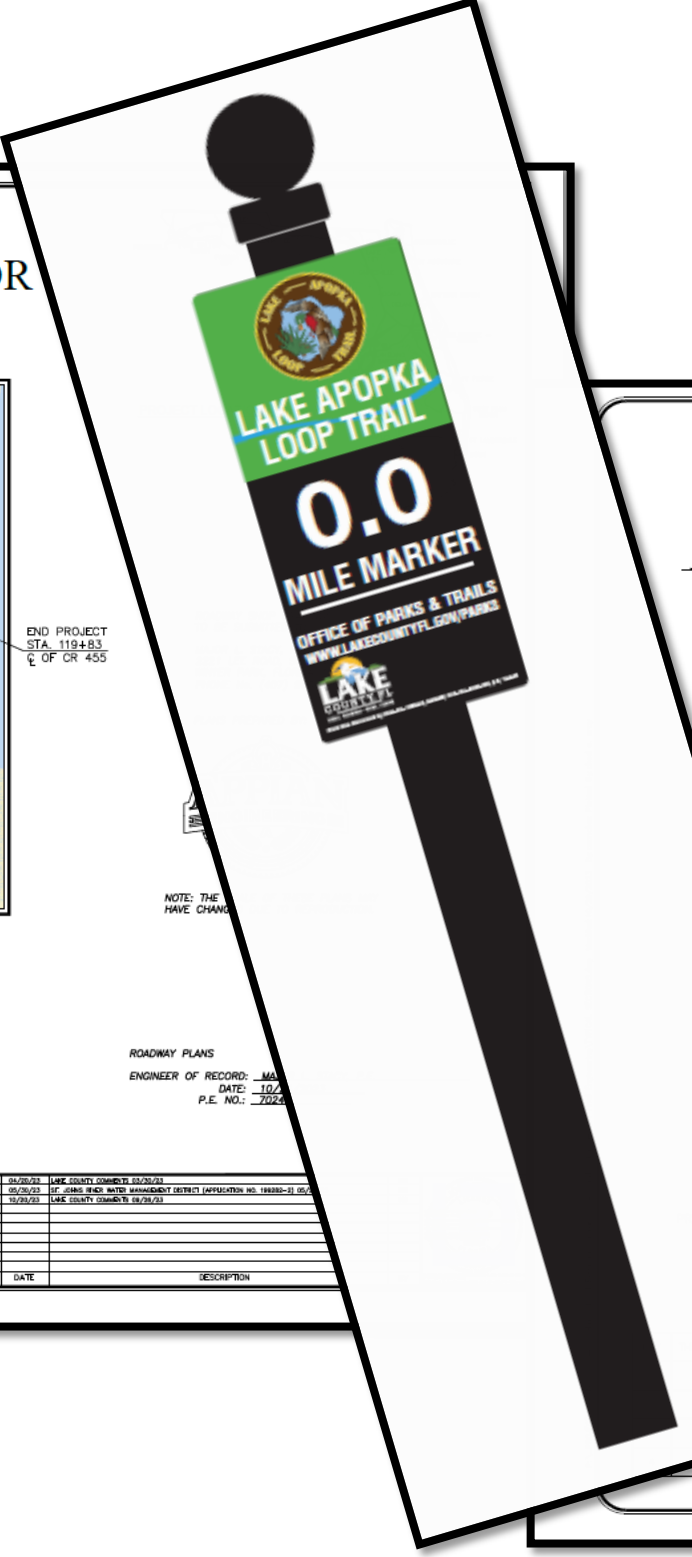




# Future



## Completing the Loop



**100% CONSTRUCTION PLANS  
GREEN MOUNTAIN CONNECTOR  
FPN 449201-1-54.01**

**INDEX OF ROADWAYS**

Sheet Title
C01 COVER
C02 SYMBOLS & ABBREVIATIONS
C03 KEY SHEET - HANCOCK ROAD
C04 KEY SHEET - COUNTY ROAD 451
C04C01 MASTER DRAINAGE PLAN - HANCOCK ROAD
C04C02 MASTER DRAINAGE PLAN - SUGARLOAF MOUNTAIN ROAD
C04C03 MASTER DRAINAGE PLAN - COUNTY ROAD 451
C04C04 TYPICAL SECTIONS
C04C05 GEOMETRY PLAN - HANCOCK ROAD
C04C06 GEOMETRY PLAN - SUGARLOAF MOUNTAIN ROAD
C04C07 GEOMETRY PLAN - COUNTY ROAD 451
C04 GENERAL NOTES
C05 COUNTY ROAD 451 & NORTH HANCOCK ROAD INTERSECTION
C06 HANCOCK ROAD & BIRCHPOINT BELLS WAY INTERSECTION
C07 SUGARLOAF MOUNTAIN ROAD & HANCOCK ROAD INTERSECTION
C08 COUNTY ROAD 451 & HANCOCK ROAD INTERSECTION
C09 PAVING & GRADING PLAN - HANCOCK RD & SUGARLOAF MOUNTAIN ROAD
C10 PAVING & GRADING PLAN - HANCOCK RD & COUNTY ROAD 451
C11 PAVING & GRADING PLAN - INTERSECT AT STA 41+00
C12 PAVING & GRADING PLAN - INTERSECT AT STA 40+00
C13 PAVING & GRADING PLAN - OFFSET
C14 PAVING & GRADING PLAN - POND 1
C15 PAVING & GRADING PLAN - POND 4
C16 PAVING & GRADING PLAN - POND 7
C17C01 DRAINAGE PLAN - HANCOCK ROAD
C17C02 DRAINAGE PLAN - COUNTY ROAD 451
C17C03 DRAINAGE PLAN - OFFSET
C17C04 DRAINAGE PLAN - POND 1
C17C05 DRAINAGE PLAN - POND 4
C17C06 DRAINAGE PLAN - POND 7
C18A01 PLAN & PROFILE - HANCOCK ROAD
C18A02 PLAN & PROFILE - SUGARLOAF ROAD
C18A03 PLAN & PROFILE - COUNTY ROAD TRAIL
C18A04 PLAN & PROFILE - HANCOCK ROAD & SUGARLOAF MOUNTAIN ROAD
C18A05 PLAN & PROFILE - HANCOCK ROAD & COUNTY ROAD 451
C18A06 PLAN & PROFILE - SUGARLOAF RD & STREET 'Y'
C18A07 PLAN & PROFILE - SUGARLOAF RD & STREET 'Y'
C18A08 HANCOCK ROAD CROSS SECTION
C18A09 COUNTY ROAD 451 TRAIL CROSS SECTION
C18A10 BRIDGE CONTROL AND DIMENSION PLAN - HANCOCK ROAD
C18A11 BRIDGE CONTROL AND DIMENSION PLAN - COUNTY ROAD 451
C18A12 BRIDGE CONTROL AND DIMENSION PLAN - SUGARLOAF ROAD
C18A13 BRIDGE CONTROL AND DIMENSION PLAN - POND 1
C18A14 BRIDGE CONTROL AND DIMENSION PLAN - POND 4
C18A15 BRIDGE CONTROL AND DIMENSION PLAN - POND 7
C18A16 ROAD STRIPES & SIGNAGE PLAN - HANCOCK ROAD
C18A17 ROAD STRIPES & SIGNAGE PLAN - COUNTY ROAD 451
C18A18 ROAD STRIPES & SIGNAGE PLAN - SUGARLOAF MOUNTAIN ROAD
C18A19 ROAD STRIPES & SIGNAGE PLAN - HANCOCK & SUGARLOAF MOUNTAIN
C18A20 UTILITY PLAN - HANCOCK ROAD
C18A21 UTILITY PLAN - SUGARLOAF MOUNTAIN ROAD
C18A22 BRIDGE CONTROL DETAILS
C18A23 CIVIL DETAILS
C18A24 UTILITY DETAILS
C18A25 DRAINAGE DETAILS
C18A26 LANDSCAPE PLANS
C18A27 SIGNAGE PLANS
C18A28 LIGHTING PLANS

**VICINITY MAP**  
SCALE: 1" = 4000'

**LENGTH OF PROJECT**

LINEAR FEET	MILES
DESIGNWAY	0.8630
ROADSIDE	0.8630
NET LENGTH OF PROJECT	1.7260
CONTRACT LENGTH OF PROJECT	1.9630

**PERMITS REQUIRED**

AGENCY	PERMIT TYPE	DATE APPLIED	DATE APPROVED	APPROVAL NO.

**APPLIAN ENGINEERING**  
2221 LEE ROAD, SUITE 27  
WINTER PARK, FLORIDA 32789  
(407) 960-5868

BOARD OF PROFESSIONAL ENGINEERS CERTIFICATE NO. 52174

**TYPICAL SECTION**  
N.T.S.  
STA 21+23 TO STA 36+96  
▲ DESIGN SPEED = 40 MPH  
POSTED SPEED = 40 MPH

**TYPICAL SECTION**  
N.T.S.  
STA 45+41 TO STA 56+07  
STA 64+56 TO STA 71+92  
STA 86+45 TO STA 100+25  
STA. 109+90 TO STA 116+54  
▲ DESIGN SPEED = 40 MPH  
POSTED SPEED = 40 MPH

**CONSTRUCTION PLANS**  
HANCOCK ROAD EXTENSION  
LAKE COUNTY, FLORIDA

**APPLIAN ENGINEERING**  
2221 LEE ROAD, SUITE 27  
WINTER PARK, FLORIDA 32789  
(407) 960-5868

BOARD OF PROFESSIONAL ENGINEERS CERTIFICATE NO. 52174



2024 FSHP Annual Meeting  
March 6- 8, 2024

# FINISH LINE



# QUESTIONS

**Greg Gensheimer PhD**

President

Green Mountain Scenic Byway

[gregjgensh@comcast.net](mailto:gregjgensh@comcast.net)

**Gallus Quigley**

Recreation Coordinator Trails

Lake County, Office of Parks and Trails

[gallus.quigley@lakecountyfl.gov](mailto:gallus.quigley@lakecountyfl.gov)



*Green Mountain Scenic Byway*